

## CHLOE LED WALL LIGHT

CODE#6303

Rated Voltage 220-240V~, 50Hz

Thank you for purchasing this quality product. To ensure correct function and safety, please read and follow all instructions carefully before assembly, installation, and use. Please keep the instructions for future reference.

### Warranty

- Please retain proof of purchase and evidence of assembly and installation by a licensed electrician.
- If the fitting is not assembled and installed by a licensed electrician, the warranty will be null in void.
- Warranty will be null in void if there is any damage due to improper usage or modification to the product.
- Failure to comply with the instructions in this manual may increase the risk of damage or injury and will void the warranty.

### Installation requirements

- This luminaire must be assembled and installed by a licensed electrician.
- All wiring and installation of the light fitting must adhere to local and national wiring rules.
- Select a suitable location for installation.
  - This product is suitable for indoor and domestic use only.
  - The mounting point must support 2 times the weight of the fitting.
  - If installing a fitting in an area prone to moisture, ensure that the area is well ventilated, and an appropriately rated exhaust fan is used if required. Damage or corrosion caused by moisture is not a product fault, and as such is not covered under the warranty.
- This luminaire is Non-dimmable and was tested at the date of publication.

**NOTE:** Testing cannot account for installation variables such as variation in mains supply voltage, cable capacitance, electrical noise, transients, surges and ripple control signals.

**NOTE:** The information provided is correct to the best of Zebbies Lighting's knowledge at the date of publication.
- Take care not to pull any electrical wires during unpacking as this may damage the connection.
- Lay out all the components on a smooth surface and make sure that there are no components missing before assembling. If parts are missing, return the complete product to the place of purchase for inspection or replacement.
- Check whether the fitting has been damaged during transport. Do not operate/install any product which appears damaged in any way. Return the complete product to the place of purchase for inspection, repair, or replacement.

### Installation directions

1. **Ensure power to the circuit you are working on has been switched OFF before commencing any electrical work.**
2. Remove all packaging material from the product and be careful not to throw away accessories that may be hidden within the packaging material. If assembly is required, place the luminaire on a smooth non-scratch surface.
3. Remove the mounting bracket from the luminaire by loosening the screws on the side. (Fig 1)
4. Use the mounting bracket as a template to mark the screw positions on the wall.
5. Install the mounting bracket onto the wall by using appropriately sized mounting screws and anchors.

# Installation Instructions

Ensure the screws and anchors used are suitable for the mounting surface and the surrounding environment. (Fig. 2)

6. Connect the mains supply wire to the terminal block. Ensure the wires are secure and no bare wires are exposed. (Fig. 3)

## Mains Supply Wire

Neutral – Blue or Black

Live – Brown or Red

## Luminaire Wire/Terminal Block

Blue or N

Brown or L

7. Install the luminaire onto the mounting bracket and secure by tightening the screws on the sides. (Fig. 4)
8. After the installation is complete, switch on the luminaire to test all functions before the licensed electrician leaves. (Fig 5 & 6)

## Safety tips

- Always ensure the power is OFF and the product has cooled down before performing any maintenance, cleaning, or adjustment to the product.
- To avoid injury or damage to the luminaire, ensure that power leads and screws are secure before connecting the power.
- Select a suitable location away from liquids and hazards.
- To clean, wipe with a soft damp cloth. Do NOT soak or immerse the luminaire in water or other liquids.
- Ensure that the luminaire does not come in contact with corrosive chemicals/solvents or abrasive cleaners etc.
- The light source of this luminaire is not replaceable; when the light source reaches its end of life, the whole luminaire shall be replaced. There are no serviceable parts, do not attempt to dismantle or open the product.

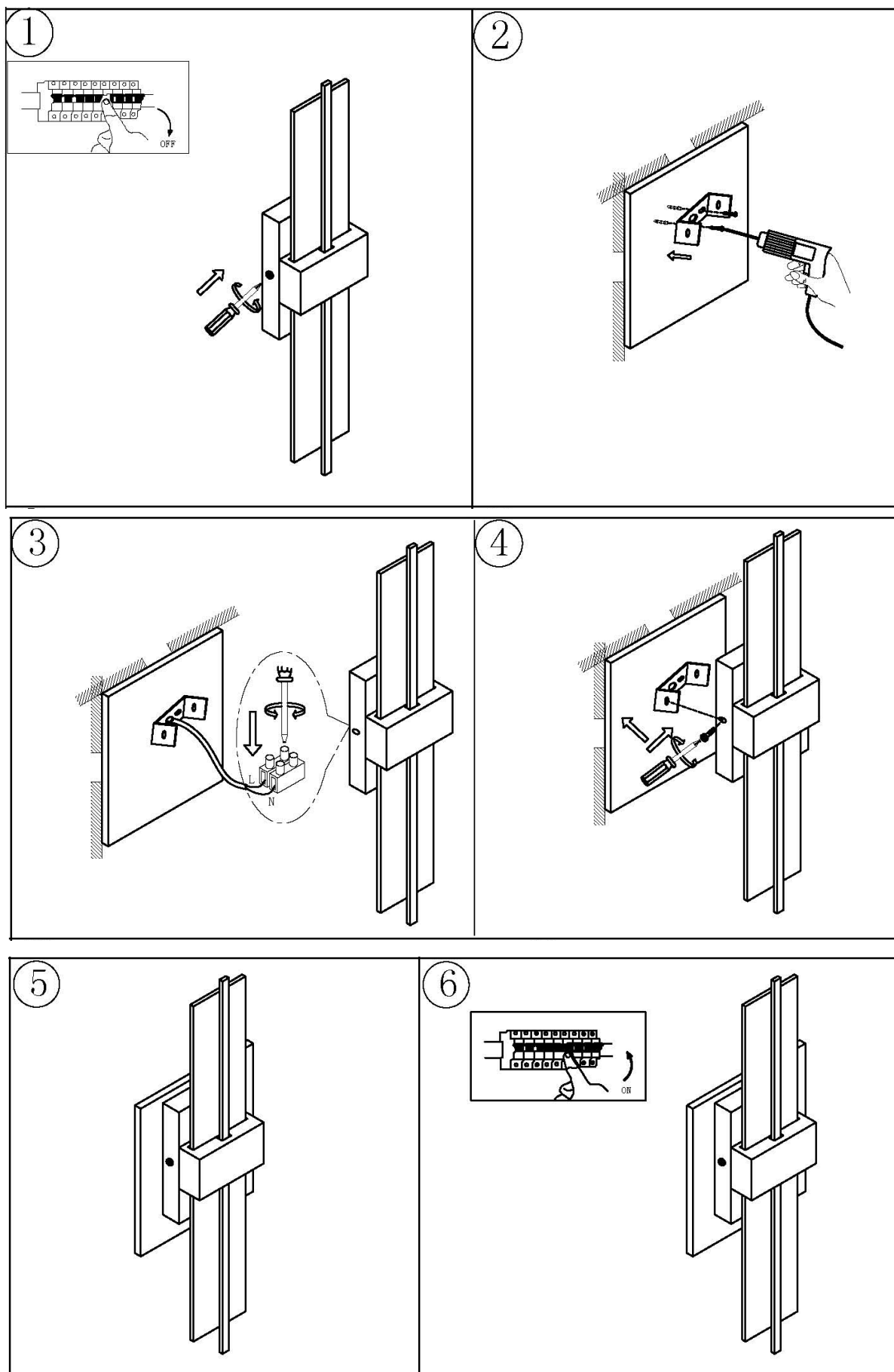
## Trouble shooting

PROBLEM	POSSIBLE CAUSE	SUGGESTED SOLUTION
Does not work. (New installation)	Loose wiring or no power to the luminaire.	Check your circuit breaker/safety switch box and turn on the power to your circuit.
		Contact the installing licensed electrician to check if the luminaire has been installed correctly.
Does not work. (Existing installation)	No power to the luminaire.	Check your circuit breaker/safety switch box and turn on the power to your circuit.
		Contact your nearest Zebbies Lighting shop.

## Specifications

Code#	6303
Colour/Finish	Matt Black
Rated Voltage	220-240V~, 50Hz
Rated wattage	7W Max.
LED Spec	200 lumens, 4000K Cool-white, Non-Dimmable, CRI>80
Weight	0.75 kg
Luminaire Dimensions	W:100mm H:500mm E:60mm

# Installation Instructions



**CAUTION:** The light source of lamp can not be replaced, please replace a whole new lamp if the light source is broken.