

Installation Instructions for 4853
Rated Voltage 220-240V, 50Hz

PLEASE READ AND SAVE ALL INSTRUCTIONS CAREFULLY BEFORE USING THE PRODUCT

WARNING - to reduce the risk of fire, electrical shock or injury to persons or property, please follow the guideline below for safe use and installation.

INSTALLATION REQUIREMENTS:

- **Must be installed by a Licensed Electrician.**
- **Must be installed according to the current wiring rules.**
- **Do not exceed the maximum wattage rating, as this may cause overheating.**
- **Suitability for use “outdoors”IP44.**
- **Insulation class: CLASS I**

INSTALLATION DIRECTION:

- Check whether the fitting has been damaged during transport. Do not operate/install any product which appears damaged in any way. Return the complete product to the place of purchase for inspection, repair or replacement.
 - Ensure all power connection is off for your own safety.
 - Level all the components on a smooth surface and make sure there is no component missing before assembly.
 - Select a suitable location for installation. The mounting point must be able to support 4 times the weight of the fitting.
-
1. Loosen the screws and remove the mounting plate cover from the wall base and open the bottom frame. (Fig 2)
 2. Install the bulb (not included) to the lamp holder.(Ensure all seals are in correct position to maintain IP44 rating. Note: Do not exceed recommended bulb wattage.) (Fig 3)
 3. Reposition the bottom frame by tightening the screws. (Fig 4)
 4. Drill the holes on the ground and hammer the anchors into the holes. (Fig 5)
 5. Secure the mounting platecover onto the wall via screws provided. Ensure the screws used are suitable for the mounting surface. (Fig 6)
 6. Connect the mains supply wire to the light fitting using the terminal block. Ensure that the wires are secure and no bare wires are exposed. (Fig 7)

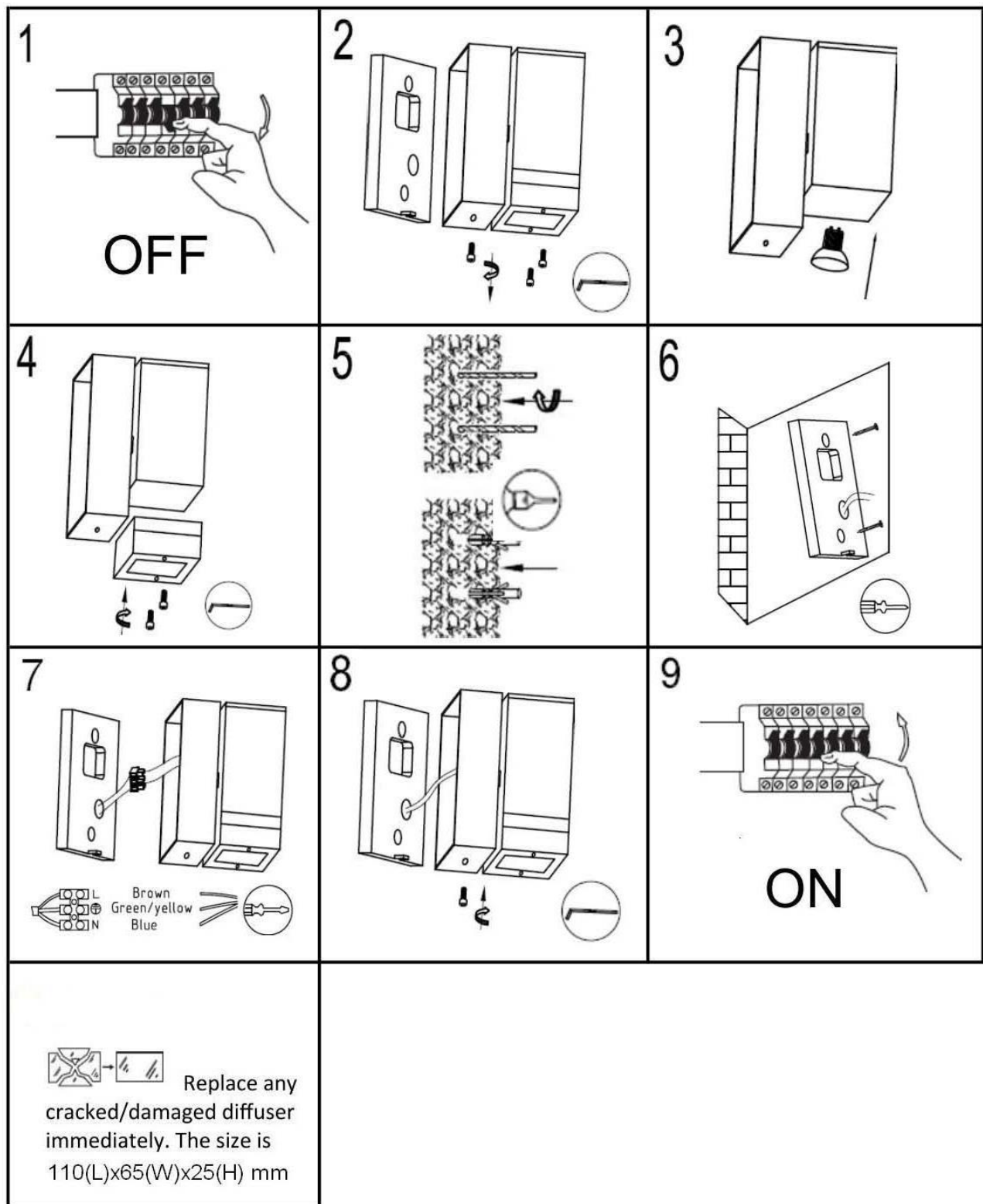
Mains Supply Wire

Earth – Yellow/Green ⊕
Neutral – Blue or Black
Live – Brown or Red

Fitting Wire

Corresponding terminal marked ⊕
Corresponding terminal on the lampholder Marked “N”
Corresponding terminal on the lampholder Marked “L”

7. Secure the lamp base onto the mounting plate via tightening the screws. (Fig 8)
8. Turn on power and enjoy your new lighting product.



TIPS

1. To avoid injury or damage to the fitting, ensure that power leads and screws are secure before connecting the power.
2. Handle the fitting and cover/shade with care to avoid breakage.
3. When changing or cleaning bulbs, turn OFF power and allow to cool. Do not touch bulbs with bare hands, use gloves or a tissue.
4. Find a suitable location away from liquids and hazards.
5. Ensure that the fitting does not come in contact with corrosive chemicals, etc.
6. To clean, wipe with a damp clean cloth. Never soak the fitting with water.

SPECIFICATIONS:

Model #	Rated Voltage	Lamp holder	Rated wattage
4854	220-240V/50Hz	GU10	1 x 11W CFL or 5W LED Max

MAINTENANCE OF OUTDOOR LIGHTS**BEFORE INSTALLING AN OUTDOOR LIGHT FITTING:**

Ensure that all screws and movable parts are covered in Copper slip, Inox or Vaseline, this will help prevent oxidization and allow for easy maintenance of replacement bulbs.

In coastal locations the treatment must be repeated four times a year.