

## ROUTE WALL LIGHT

SKU# 4353

Rated Voltage 220-240V~ 50Hz

Thank you for purchasing this quality product. To ensure correct function and safety, please read and follow all instructions carefully before assembly, installation and use of this luminaire. Please keep instructions for future reference.

### Warranty

- The warranty is from date of purchase, not the date of installation.
- If the luminaire is not assembled and installed by a licensed electrician, the warranty will be null-in void.
- Please retain proof of purchase and evidence of installation by a licensed electrician for any warranty enquiries.
- Warranty will be null-in void if there is any damage due to improper usage or modification to the luminaire.
- Failure to comply with the instructions in this manual may increase the risk of damage or injury and will void the warranty.

### Installation Requirements

- Must be assembled and installed by a licensed electrician.
- All wiring and installation of the luminaire must adhere to the latest local and national wiring rules.
- This luminaire is a Class I product and must be earthed during wiring and installation.
- This luminaire is rated IP44. This must be maintained during installation.
- Replace any cracked protective lamp shade to maintain IP rating when using this luminaire.
- Do not exceed the maximum wattage rating.
- Select a suitable location for installation:
  - This luminaire is rated against water penetration to IP44 standards, which is splashing water from any direction.
  - The mounting point must be able to support 2 times the weight of the luminaire.
- Take care not to pull any electrical wires during unpacking as this may damage the connection.
- Lay out all the components on a smooth surface and make sure there are no components missing before assembling. If parts are missing, return the complete product to the place of purchase for inspection or replacement.
- Check whether the luminaire has been damaged during transport. Do not operate/install any product which appears damaged in any way. Return the complete product to the place of purchase for inspection, repair or replacement.

### Installation Directions

## Installation Instructions

- Ensure power to the circuit you are working on has been switched OFF before commencing any electrical work.
- Remove all packaging material from the product and be careful not to throw away accessories that maybe hidden within the packaging material. If assembly is required, place the luminaire on a smooth non-scratch surface. (Fig 1)
- Loose the shade frame from the wall base by using the hexagon wrench (①). Remove the shade frame (②), the glass shade (③) and waterproof ring (④) from the wall base. Remove the mounting bracket from the luminaire by loosening the screw, rubber ring and washer (⑤). Use the mounting bracket as a template to mark the screw positions on the wall. Insert the plastic anchors (⑥) to the wall. Install the mounting bracket onto the wall by using appropriately sized mounting screws, rubber ring and washer (⑦) and anchors. Ensure the screws and anchors used are suitable for the mounting surface and the surrounding environment. (Fig 2)
- Connect the mains supply wire to the terminal block (①), Ensure the wires are secure and no bare wires are exposed.

### Mains Supply Wire

Earth – Yellow/Green 

Neutral – Blue or Black

Live – Brown or Red

### Luminaire Wire / Terminal Block

Yellow/Green or 

Blue or N

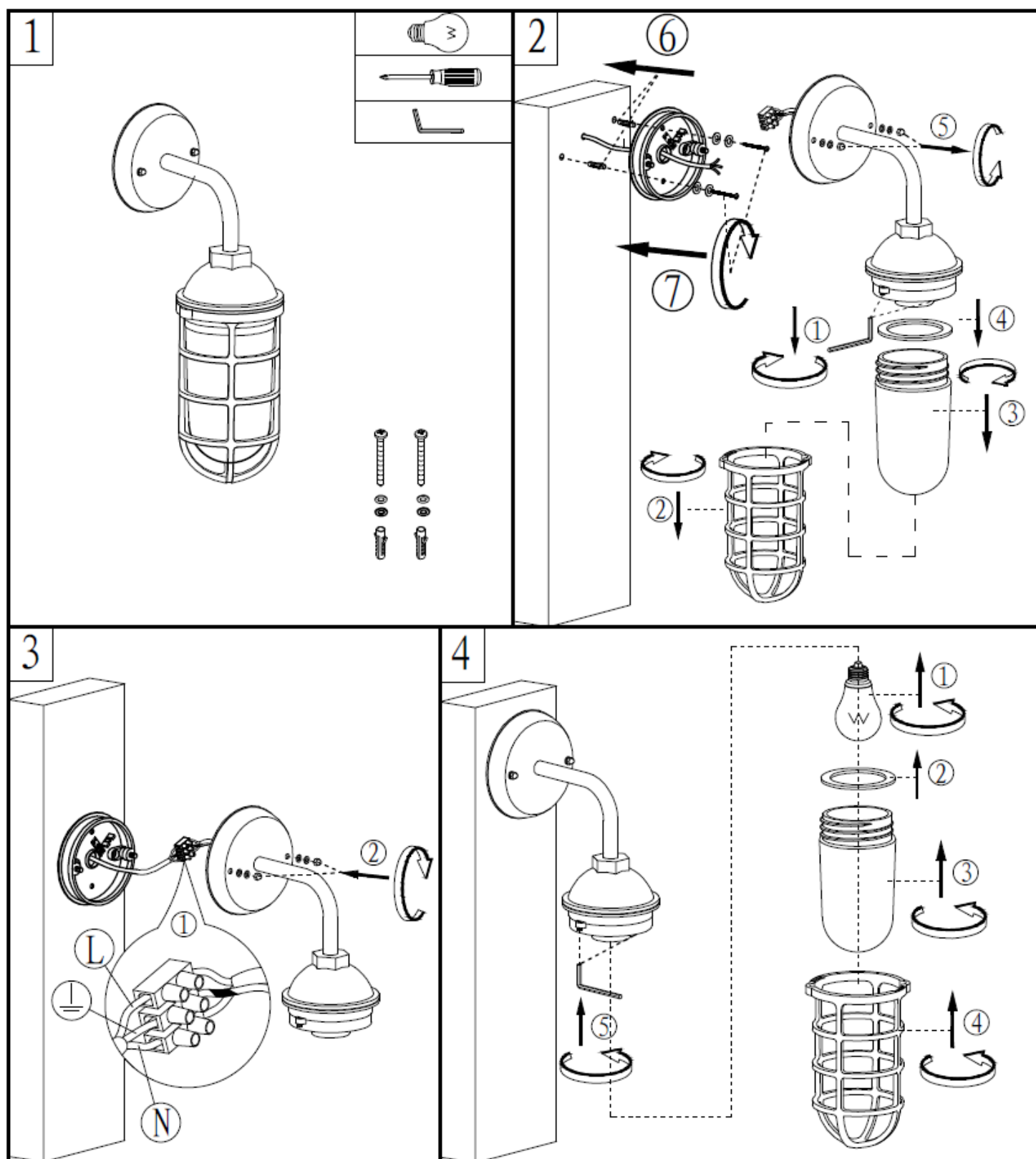
Brown or L

**NOTE: A non-corrosive bead of silicone MUST be applied before installation onto the wall ensuring that no water can run down into the cabling.**

Install the luminaire onto the mounting bracket and secure by tightening the screws (②). (Fig 3)

- Install a globe (① - not included) into the lamp holder. Do not exceed the maximum wattage rating. Install back the waterproof ring (②), the glass shade (③) and the shade frame (④) to the ceiling base, with the hexagon wrench (⑤) to tighten. (Fig 4)
- After the installation, switch on the luminaire to test and enjoy your new lighting product.

Specifications			
SKU #	4353		
Colour	Sand black and clear glass		
Rated Voltage	220-240V~ 50Hz		
Rated Wattage	1 x 10W LED		
Lamp Holder	ES (E27)		
Weight	0.9kgs		
IP Rating	IP44		
Dimensions	W:125mm	H:390mm	E:190mm



### Safety Tips

- Always ensure the power is OFF and the luminaire has cooled down before performing any maintenance, cleaning, changing the globe or making any adjustment to the luminaire.
- To avoid injury or damage to the luminaire, ensure that power leads and screws are secure before connecting the power.
- Select a suitable location away from liquids and hazards.
- Ensure that the luminaire does not come into contact with corrosive chemicals/solvents or abrasive cleaners etc.
- To clean, wipe with a damp clean cloth. Do NOT soak or immerse the luminaire in water or other liquids.

## **MAINTENANCE OF OUTDOOR LIGHTS**

### **BEFORE INSTALLING AN OUTDOOR LIGHT FITTING:**

**Ensure that all screws and movable parts are covered in Copper slip, Inox or Vaseline, this will help prevent oxidization and allow for easy maintenance and the replacement bulbs.**

**In coastal locations the treatment must be repeated four times a year.**