

Installation Instructions for 3022

Rated Voltage 220-240V, 50Hz

PLEASE READ AND SAVE ALL INSTRUCTIONS CAREFULLY BEFORE USING THE PRODUCT

WARNING - to reduce the risk of fire, electrical shock or injury to persons or property, please follow the guideline below for safe use and installation.

INSTALLATION REQUIREMENTS:

- **Must be installed by a Licensed Electrician.**
- **Must be installed according to the current wiring rules.**
- **Do not exceed the maximum wattage rating, as this may cause overheating.**
- **Suitability for use “outdoors”IP44.**
- **Insulation class: CLASS I**

INSTALLATION DIRECTION:

- Check whether the fitting has been damaged during transport. Do not operate/install any product which appears damaged in any way. Return the complete product to the place of purchase for inspection, repair or replacement.
- Ensure all power connection is off for your own safety.
- Select a suitable location for installation. The mounting point must be able to support 4 times the weight of the fitting.

1. Level all the components on a smooth surface and make sure there is no component missing before assembly. (Fig 1)
2. Drill a square hole (size 157*56*85mm) to fit the mounting base. (Fig 2)
3. Loosen the screws and remove the stainless face plate from the aluminium housing. Use the cross screwdriver to remove the screw between the aluminium housing and the black plastic mounting base, place the black plastic mounting base into the hole. Open the junction box cover and loose the screws inside of terminal block by using the cross screwdriver. (Fig 3)
4. Connect the mains supply wire to the light fitting using the terminal block. Ensure that the wires are secure and no bare wires are exposed. Install the cover back over the junction box (Fig 4)

Mains Supply Wire

Earth – Yellow/Green⊕

Neutral – Blue or Black

Live – Brown or Red

Fitting Wire

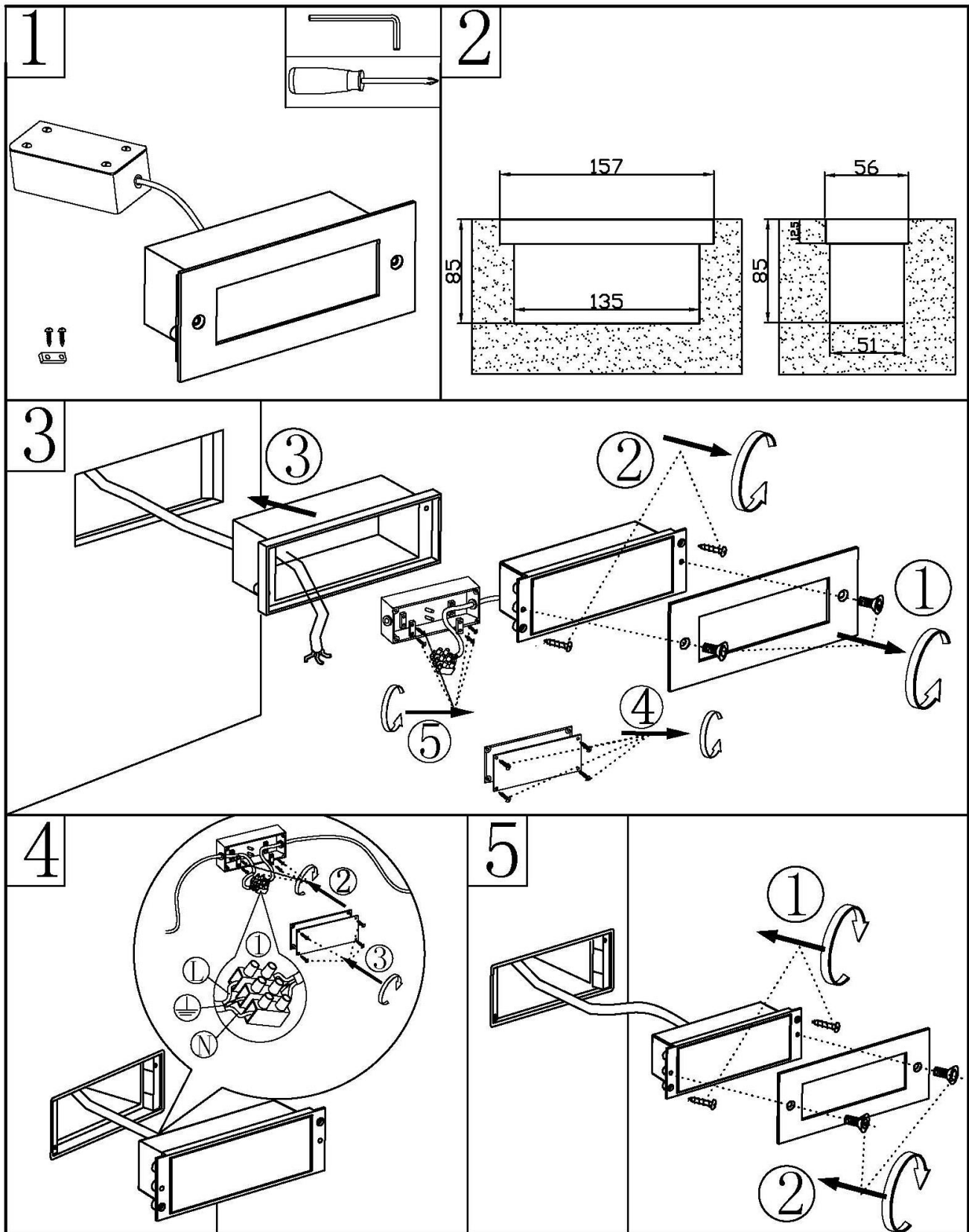
Corresponding terminal marked⊕

Corresponding terminal on the lampholder Marked “N”

Corresponding terminal on the lampholder Marked “L”

5. Reposition the aluminium housing to the black plastic mounting base by tightening the screws. Tighten the stainless face plate to the aluminium housing with the screws to secure. (Fig 5)
6. Turn on power and enjoy your new lighting product.

CAUTION: The light source of lamp cannot be replaced, please replace a whole new lamp if the light source is broken.



TIPS

1. To avoid injury or damage to the fitting, ensure that power leads and screws are secure before connecting the power.
2. Handle the fitting and cover/shade with care to avoid breakage.
3. When changing or cleaning bulbs, turn OFF power and allow to cool. Do not touch bulbs with bare hands, use gloves or a tissue.

4. Find a suitable location away from liquids and hazards.
5. Ensure that the fitting does not come in contact with corrosive chemicals, etc.
6. To clean, wipe with a damp clean cloth. Never soak the fitting with water.

SPECIFICATIONS:

Code#	3022		
Colour/Finish	316 stainless steel and glass		
Rated Voltage	220-240V~, 50Hz		
LED Spec	2W, 6500K, 100lm		
Weight	0.45kgs		
Dimensions	L: 170mm	W: 70mm	H: 50mm

MAINTENANCE OF OUTDOOR LIGHTS

BEFORE INSTALLING AN OUTDOOR LIGHT FITTING:

Ensure that all screws and movable parts are covered in Copper slip, Inox or Vaseline, this will help prevent oxidization and allow for easy maintenance of replacement bulbs.

In coastal locations the treatment must be repeated four times a year.