

## Installation Instructions for 3019

### Rated Voltage 220-240V, 50Hz

**PLEASE READ AND SAVE ALL INSTRUCTIONS CAREFULLY BEFORE USING THE PRODUCT**



**WARNING** - to reduce the risk of fire, electrical shock or injury to persons or property, please follow the guideline below for safe use and installation.

#### **INSTALLATION REQUIREMENTS:**

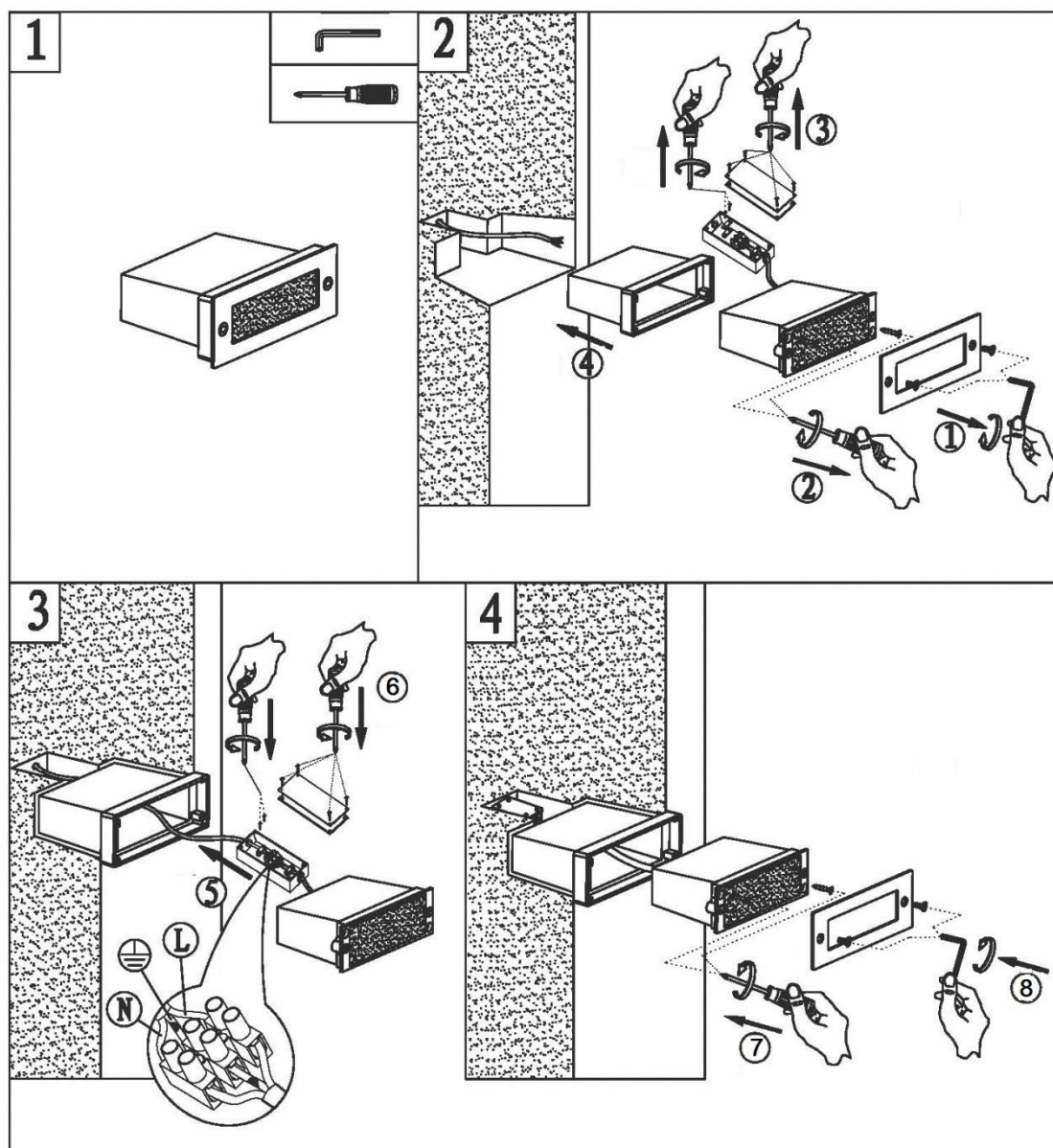
- **Must be installed by a Licensed Electrician.**
- **Must be installed according to the current wiring rules.**
- **Do not exceed the maximum wattage rating, as this may cause overheating.**
- **Suitability for use “outdoors” IP44.**
- **Insulation class: CLASS I**

#### **INSTALLATION DIRECTION:**

- Check whether the fitting has been damaged during transport. Do not operate/install any product which appears damaged in any way. Return the complete product to the place of purchase for inspection, repair or replacement.
  - Ensure all power connection is off for your own safety.
  - Level all the components on a smooth surface and make sure there is no component missing before assembly.
  - Select a suitable location for installation. The mounting point must be able to support 4 times the weight of the fitting.
1. Loosen the screws to separate the lamp body from the embedded box (Fig ① & ②) and open the junction box (Fig ③). Install the embedded box onto the wall. (Fig ④)
  2. Connect the mains supply wire to the terminal block. (Fig ⑤)

Mains Supply Wire	Fitting Wire
Earth – Yellow/Green 	Yellow/Green or 
Neutral – Blue or Black	Blue
Live – Brown or Red	Brown
  3. Ensure the wires are secure and no bare wires are exposed. Install the cover back over the terminal block. (Fig ⑥)
  4. Secure the lamp body onto the embedded box via tightening the screws again. (Fig ⑦ & ⑧)
  5. Turn on power and enjoy your new lighting product.

**CAUTION:** The light source of the lamp cannot be replaced, please replace a whole new lamp if the light source is broken.



### **TIPS**

1. To avoid injury or damage to the fitting, ensure that power leads and screws are secure before connecting the power.
2. Handle the fitting and cover/shade with care to avoid breakage.
3. When changing or cleaning bulbs, turn OFF power and allow to cool. Do not touch bulbs with bare hands, use gloves or a tissue.
4. Find a suitable location away from liquids and hazards.
5. Ensure that the fitting does not come in contact with corrosive chemicals, etc.
6. To clean, wipe with a clean soft cloth. Never soak the fitting with water.

### **SPECIFICATIONS:**

SKU #	3019		
Colour/Finish	Stainless		
Rated Voltage	220-240V~, 50Hz		
LED Spec	2W, 6400K, 93lm		
Dimensions	L.:105mm	W:40mm	H: 53mm

## **Stainless Steel Clean and Care Instructions**

This recommends to maintain or create a protective film for your stainless steel product and to keep them looking good;

Before installation, the stainless steel parts must be treated with neutral oil.

1. Use a soft cloth soaked with WD-40 or equivalent neutral oil.
2. Ensure the neutral oil covers all surfaces and reaches to all the joint areas.
3. After treatment, dry the area with a soft cloth.

Ensure that all screws and movable parts are covered in Copper slip, Inox or Vaseline, this will help prevent oxidization and allow for easy maintenance.

In coastal locations, the treatment must be repeated at least 4 times a year. An example of an extreme location is an area by the sea, where ocean salt carried by sea spray contains chlorine. When deposited on the stainless steel it can very quickly corrode the iron on the surface. This is the most common example of tea-staining.

For cases with serious corrosion, use an abrasive paste (specially designed for stainless steel or chrome) to remove the stain and then apply the neutral oil again.

### **Note:**

- Do not let any cleaning liquid enter the electrical wiring of your light fitting during cleaning.
- When cleaning a surface with any chemical preparation or abrasive medium, a trial should be done on a small area, to check that the resulting finish matches with the original.
- If wire brushes or scourers are used, these should be made of a similar or better grade of stainless steel. Ensure that all abrasive media used are free from sources of contamination, especially iron and chlorides.
- For Brushed Stainless Steel finish, always clean along the grain of the stainless steel. Failure to do so may alter the Brushed finish look.
- Always follow the manufacturer instruction when using a cleaning agent.