

**Installation Instructions for 3003 & 3004**  
**Rated Voltage 220-240V, 50Hz**

**PLEASE READ AND SAVE ALL INSTRUCTIONS CAREFULLY BEFORE USING THE PRODUCT**

**WARNING** - to reduce the risk of fire, electrical shock or injury to persons or property, please follow the guideline below for safe use and installation.

**INSTALLATION REQUIREMENTS:**

- **Must be installed by a Licensed Electrician.**
- **Must be installed according to the current wiring rules.**
- **Do not exceed the maximum wattage rating, as this may cause overheating.**
- **Suitability for use “outdoors” IP44.**
- **Insulation class: CLASS I**

**INSTALLATION DIRECTION:**

- Check whether the fitting has been damaged during transport. Do not operate/install any product which appears damaged in any way. Return the complete product to the place of purchase for inspection, repair or replacement.
- Ensure all power connection is off for your own safety.
- Level all the components on a smooth surface and make sure there is no component missing before assembly.

Remove the screws, guard and protective glass from the mounting base.

Drill the holes on the wall and hammer the anchors in the wall

Pass the supply cable through the rubber protective ring on back of fitting

Then secure the mounting base onto the wall via suitable screws.

Connect the mains supply wire to the light fitting. Ensure that the wires are secure and no strains of bare wires are exposed.

**Mains Supply Wire**

Earth – Yellow/Green 

Neutral – Blue or Black

Live – Brown or Red

**Fitting Wire**

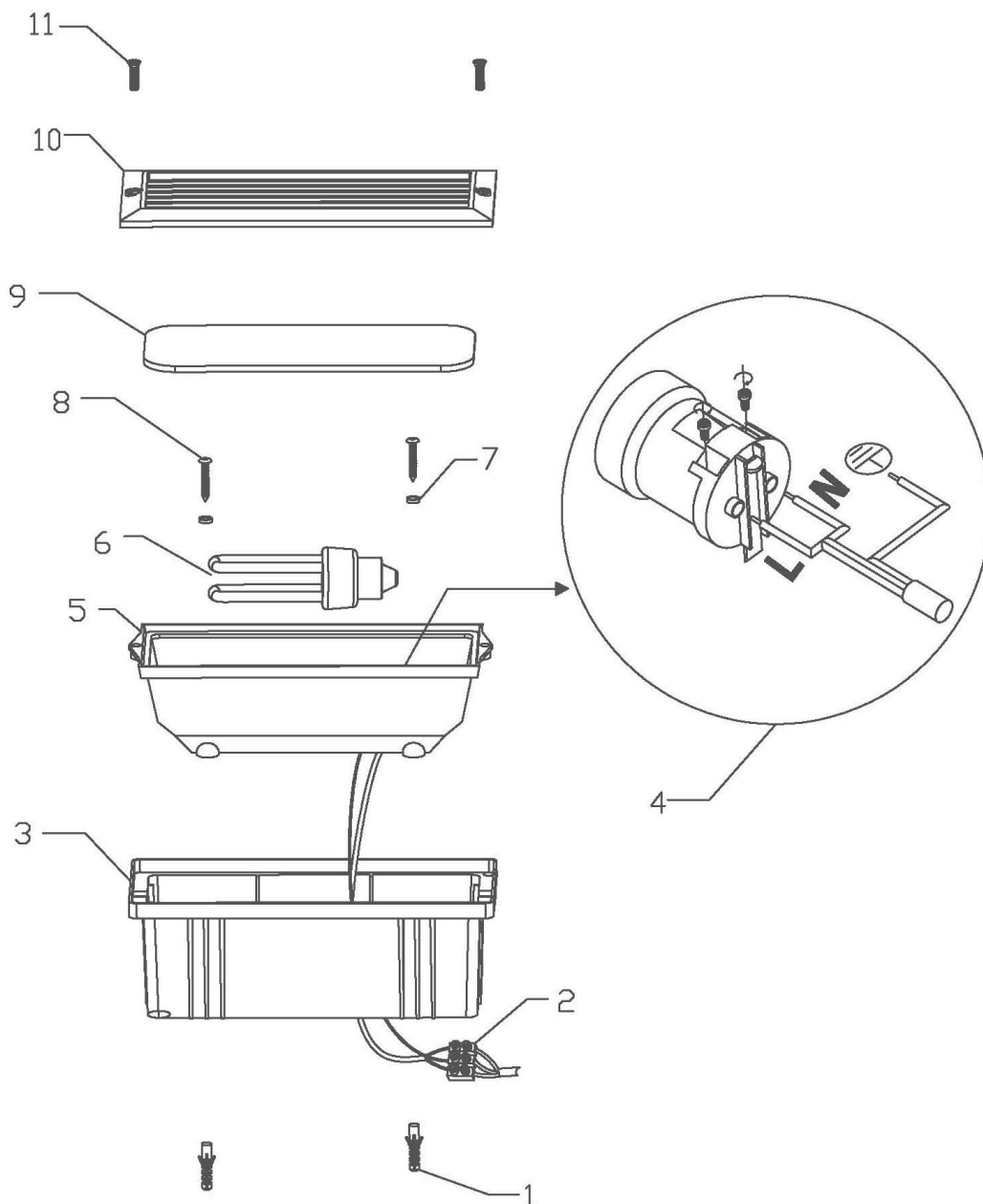
Ground lead

Corresponding terminal on the lampholder Marked “L”

Corresponding terminal on the lampholder Marked “N”

Install the bulb (not included). Ensure all seals are in correct position to maintain IP44 rating. Note: Do not exceed recommended bulb wattage.

Secure the guard, protective glass, and the mounting base via tightening the cover screws.



### **TIPS**

1. To avoid injury or damage to the fitting, ensure that power leads and screws are secure before connecting the power.
2. Handle the fitting and cover/shade with care to avoid breakage.
3. When changing or cleaning bulbs, turn OFF power and allow to cool. Do not touch bulbs with bare hands, use gloves or a tissue.
4. Find a suitable location away from liquids and hazards.
5. Ensure that the fitting does not come in contact with corrosive chemicals, etc.
6. To clean, wipe with a damp clean cloth. Never soak the fitting with water.

### **SPECIFICATIONS:**

Model #	Rated Voltage	Lamp holder	Rated wattage
3003 & 3004	220-240V/50Hz	E27	1 x 40W or 15W CFL MAX

## **MAINTENANCE OF OUTDOOR LIGHTS**

### **BEFORE INSTALLING AN OUTDOOR LIGHT FITTING:**

**Ensure that all screws and movable parts are covered in Copper slip, Inox or Vaseline, this will help prevent oxidization and allow for easy maintenance of replacement bulbs.**

**In coastal locations the treatment must be repeated four times a year.**