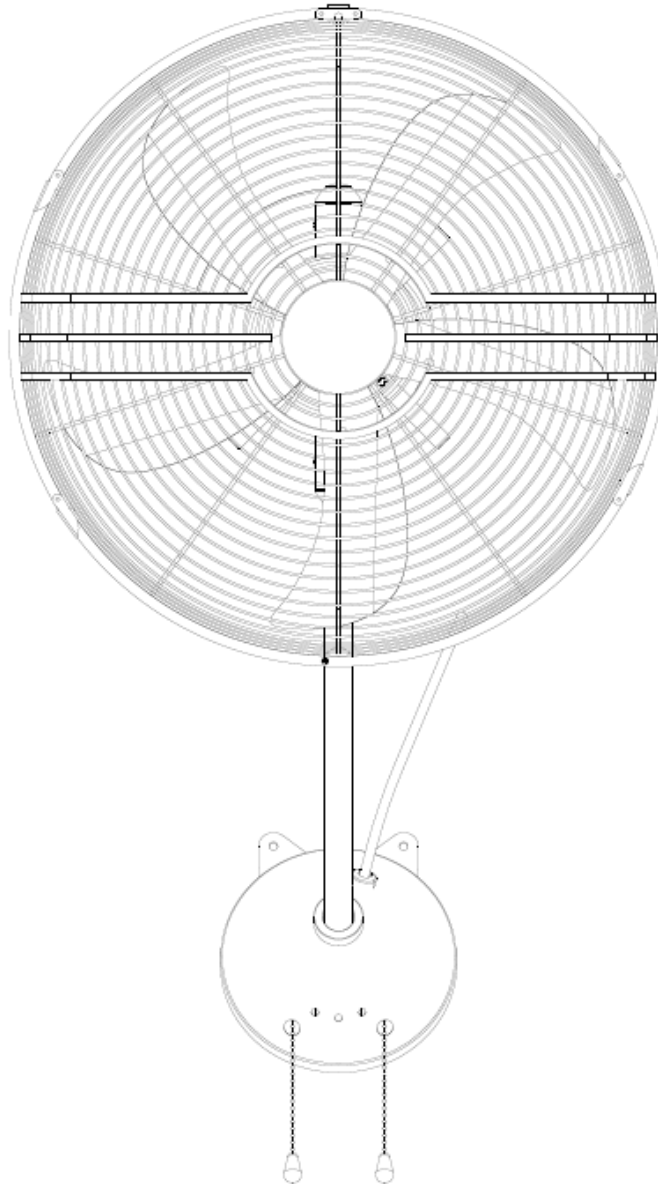


AIRSTREAM FAN MANUAL

- INSTALLATION
- OPERATION
- MAINTENANCE
- WARRANTY INFORMATION



WALL FAN# 2524 & 2525

CAUTION

**READ INSTRUCTIONS CAREFULLY FOR SAFE
INSTALLATION AND FAN OPERATION.**

CONGRATULATIONS ON YOUR CHOICE

CONGRATULATIONS, as you have just chosen a good quality wall fan.

SAFETY PRECAUTIONS

The information contained in the following pages has been prepared to ensure you of trouble-free operation of your wall fan .

This appliance is not intended for use by persons (including children) with reduced physical, sensory or mental capabilities, or lack of experience and knowledge, unless they have been given supervision or instruction concerning the use of the appliance by a person responsible for their safety.

Children should be supervised to ensure that they do not play with the appliance.

1. To ensure the success of the installation be sure to read the instructions and study the diagrams thoroughly.
2. For your safety, all electrical connections and disconnections must be performed by a Licensed Electrician.
3. All electrical work should only be undertaken after disconnection of the power by removing fuses or turning off the circuit breaker to ensure all pole isolation of the electrical supply. If you are in any doubt the services of a qualified electrician should be sought to ensure that all work is carried out in accordance with the local regulations, current good practices and other national and local electrical codes.
4. Make sure that your installation location will not allow the rotating fan blades to come into contact with any object and that there is a minimum clearance of 30cm from the fan to the wall or nearest object. Please note that the bigger this clearance is the better the airflow from your fan will be.
5. The fixing point for the fan must be able to support a weight of at least 30kg. If you are mounting the fan to a wall junction box, the box and it's fixing must be able to support the moving weight of the fan and must not twist or work loose.
6. The fan must be earthed.
7. The fan must be turned off and stopped completely before reversing the fan direction. This will prevent any damage to the motor of the unit (if installed).
8. Do not insert anything into the fan blades while the fan is operating, as this may cause a person injury, damage the blades.
9. After the fan is completely installed make sure that all connections are secured and tightened to prevent any problems.
10. Because of the fan's natural movement, some connections may loosen. Check the support connections, brackets, and blade attachments twice a year to make sure they are all secured. If they are loose, tighten with a screwdriver.

Note: The important safeguards and instructions given in this manual are not meant to cover all possible conditions and situations that may occur. It must be understood that common sense, caution and care are factors, which cannot be built into any product. The persons caring for and using the unit must supply these factors.

For installation advice, please consult a licensed electrician. In the unlikely event of damaged or missing parts please contact the Zebbies Store in which it was purchased or your nearest Zebbies store for assistance.

IMPORTANT NOTES

FAN INSTALLATION

Under our warranty terms, this ceiling fan must be installed by a licensed electrician. Improperly installed ceiling fans can be dangerous and expensive to repair. This will void your warranty too.

FAULT FINDER

Always check the “Trouble Shooting Checklist” included in this booklet before calling for service. Unnecessary calls are inconvenient for all and can attract a service charge.

MECHANICAL NOISE MAY BE NOTICED ON INSTALLATION-ALLOW AT LEAST 8 HOURS SETTLING-IN PERIOD. SOME FANS NOISE MORE THAN OTHERS—EVEN IN THE SAME MODEL, IT DOES NOT MEAN THE FAN IS FAULTY.

WARNING

This appliance is not intended for use by persons (including children) with reduced physical, sensory, or mental capabilities, or lack of experience and knowledge, unless they have been given supervision or instruction concerning use of the appliance by a person responsible for their safety.

Children should be supervised to ensure that they do not play with the appliance.

Sleek & modern high-velocity wall fan provides more powerful wind than ordinary plastic fans. Draws air off the floor and circulate through the entire room keeping room cool and breezy. Put near the windows and it helps exhaust hot indoor stuffy air and pulls in fresh outdoor air.

BEFORE INSTALLATION

Unpack your ceiling fan carefully. Remove all parts and hardware. Place fan motor on a cloth or soft surface to avoid damaging the finish.

Do not lay motor housing on its side – as the decorative housing may become bent or damaged.

Verify that all parts are present before starting assembly.

Check the packaging carefully for missing parts.

Examine all parts. You should have the following:

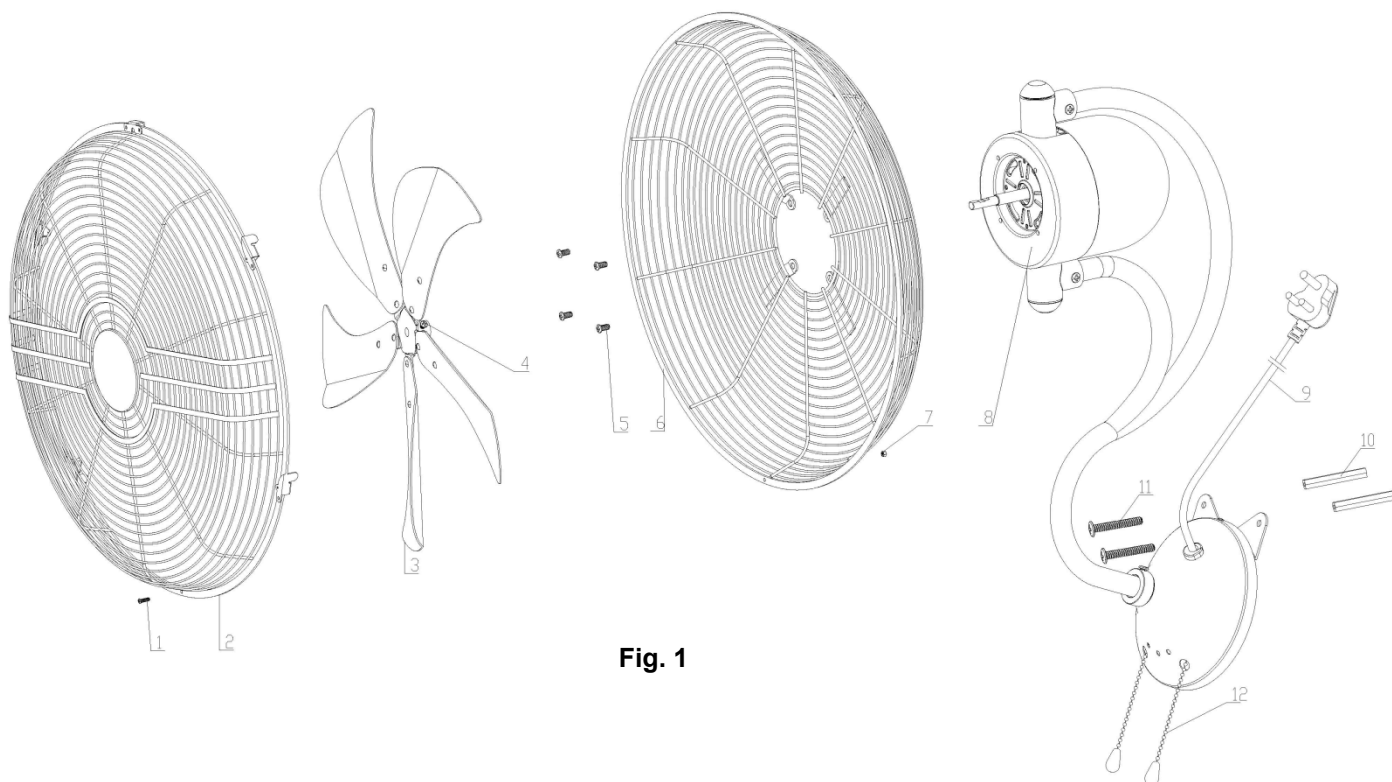


Fig. 1

Fig.1

1	M2.5X10 screw	x 1	7	Nut M2.5	x 1
2	Front guard dia.450mm	x 1	8	Motor housing/motor	x 1
3	Blade set dia.400mm	x 1	9	Power cord	x 1
4	Screw M4x8	x 1	10	Plastic anchors	x 2
5	Screw M5x12	x 4	11	Machine screw ST5x30	x 2
6	Rear guard dia.450mm	x 1	12	Pull chain	x 2

INSTALLATION INSTRUCTION

SAFETY AFETY PRECAUTIONS:

- This appliance is not intended for use by persons (including children) with reduced physical, sensory or mental capabilities, or lack of experience and knowledge, unless they have been given supervision or instruction concerning use of the appliance by a person responsible for their safety.
- Children should be supervised to ensure that they do not play with the appliance.
- Have any repairs carried out solely by a qualified electrician. Never try to repair the appliance yourself
- Secure the mounting bracket to the ceiling joist or structure that is capable of carrying a load of at least 30KG, with two plastic anchor, flat washer, star washer and machine screws provided. Ensure at least 50mm of the screw is threaded into the support.

INSTALLATIONS

Step-1: Remove the 4pcs screws from the fan motor housing; (Fig. 2)

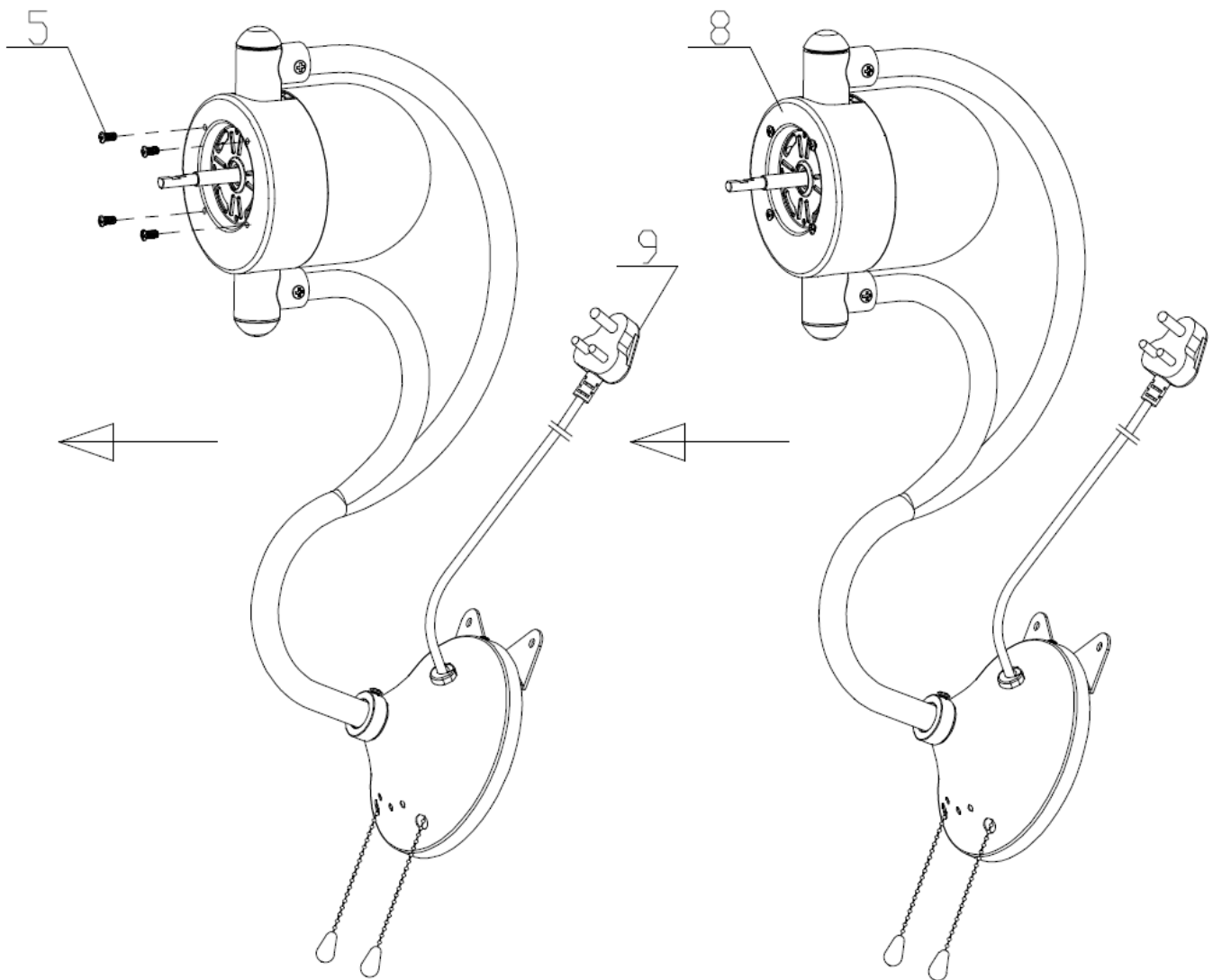


Fig. 2

Step-2: Put the rear fan guard to the fan motor housing (screw safety hole should be placed towards bottom), with the screws to tighten; (Fig. 3)

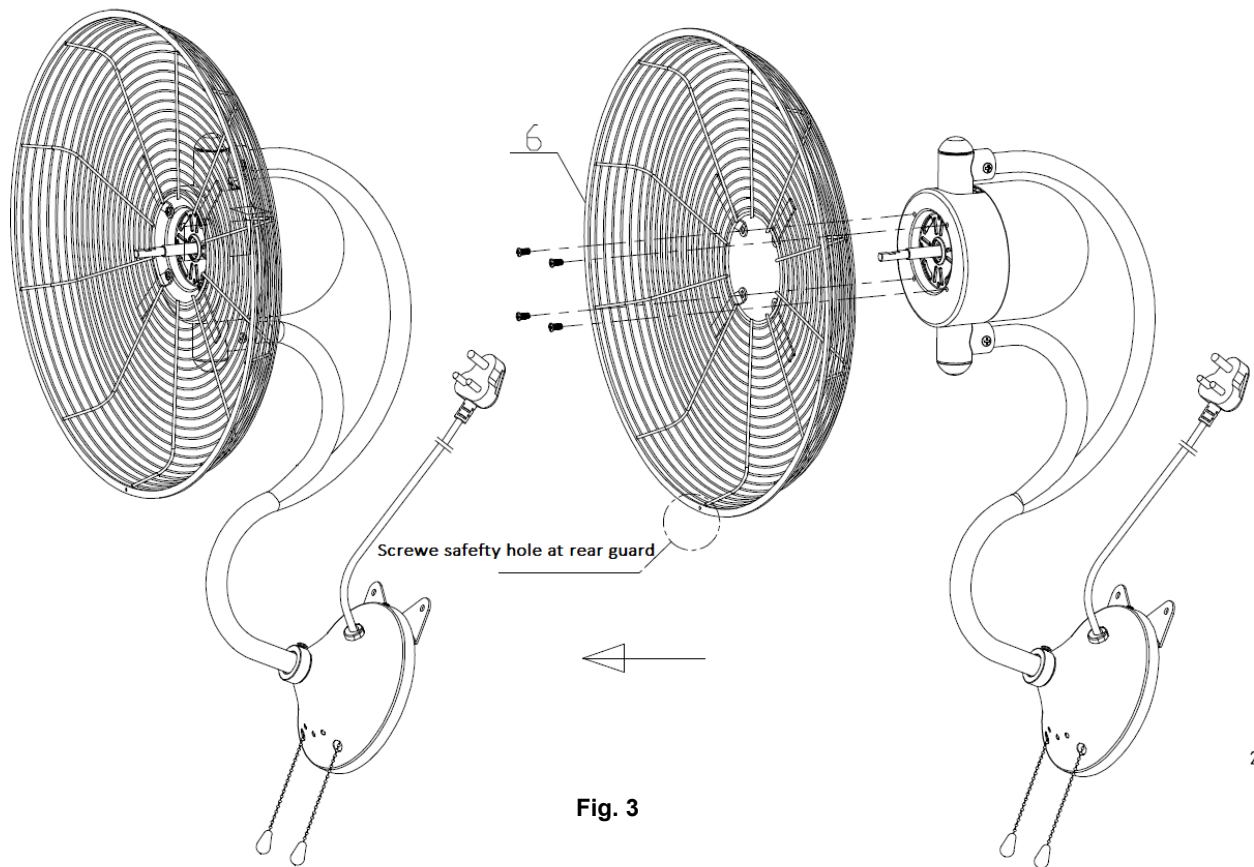


Fig. 3

Step-3: insert the fan blade into the motor shaft, with the screw to tighten; (Fig. 4)

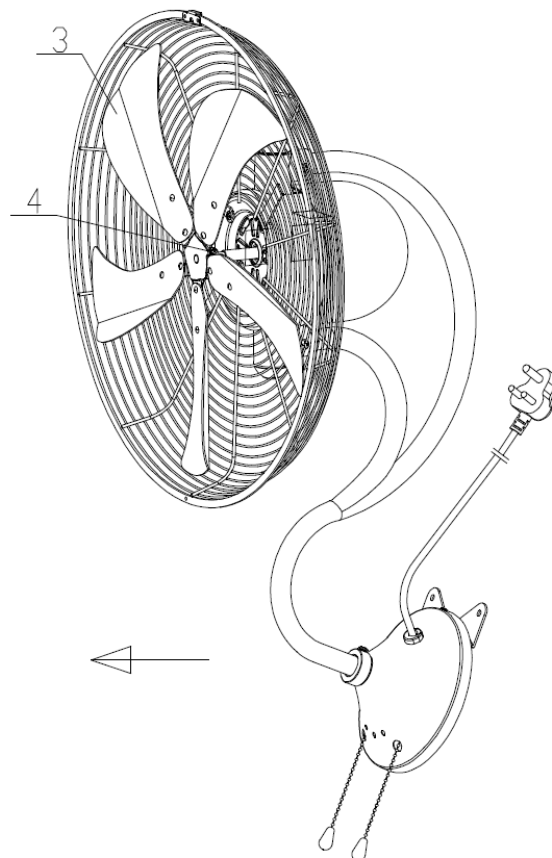


Fig. 4

Step-4: Remove the screws from the front guard; (Fig. 5)

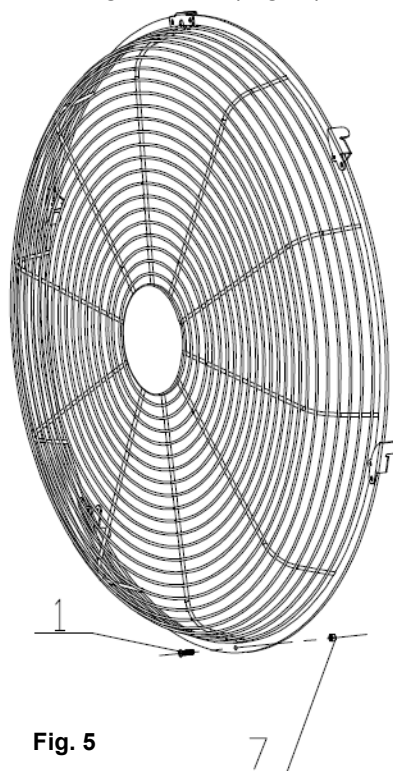


Fig. 5

Step-5 Install the front guard to the rear guard (the screw safety hole at bottom to match the one on rear guard), with nut to tighten. Put back the clips to close the fan guards well. (Fig. 6)

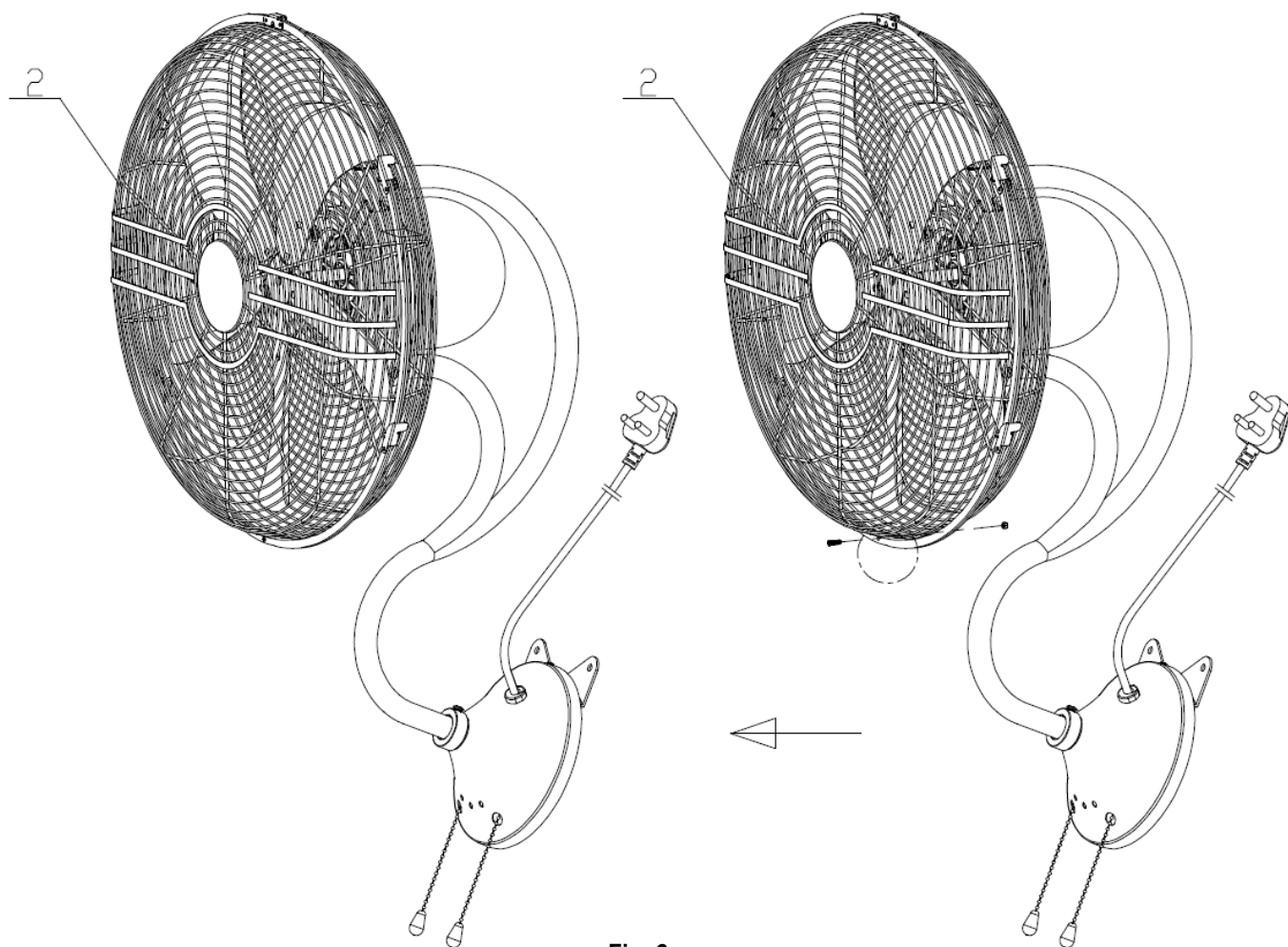


Fig. 6

Step-6 Drill 2 holes (dia.7mm x E50mm x L88mm) on the wall, insert the plastic anchors to the holes on wall; (Fig. 7)

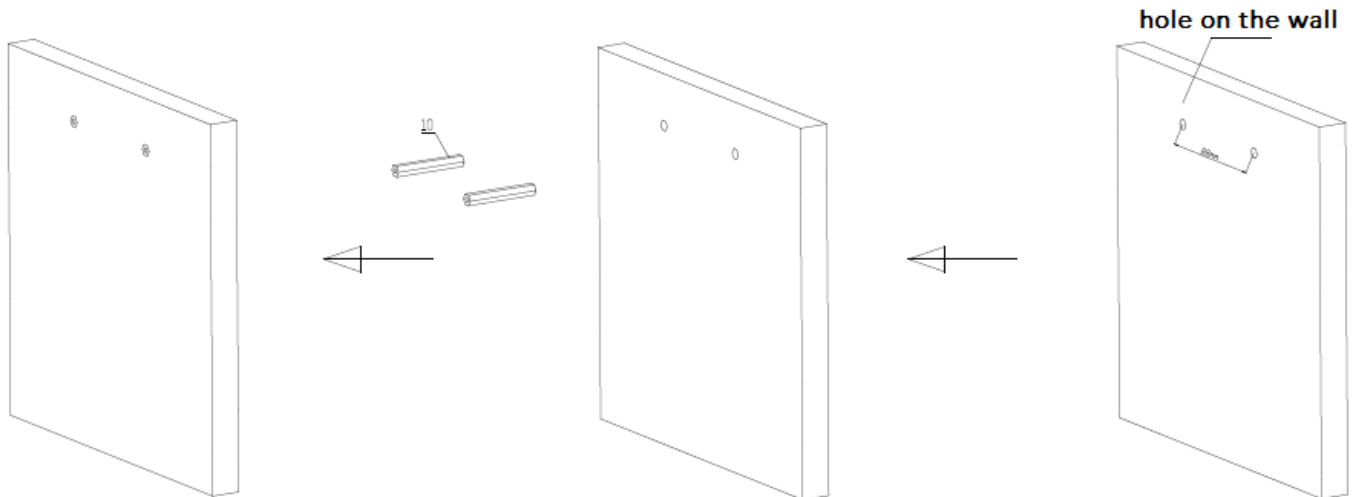


Fig. 7

Step-7 Install the fan to the holes on wall with the machine screws to secure. Insert the plug into the mains power socket outlet and ensure it is fully plugged in. Turn power on at the mains power socket outlet. Use the chain switch on fan to turn the fan on/off and select speeds. (Fig. 8)

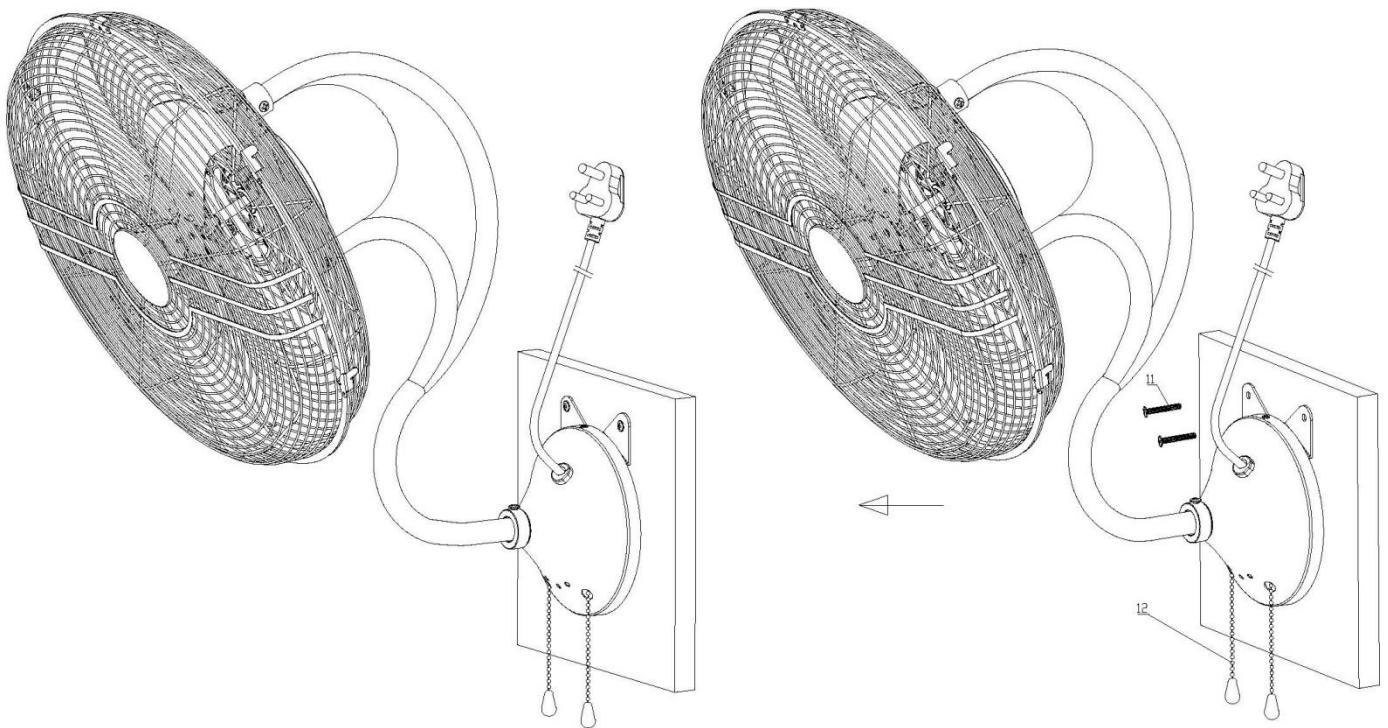


Fig. 8

OPERATION INSTRUCTIONS:

- a) Ensure voltage used corresponds with the voltage indicated.
- b) Pull the switch cord to selected speeds: 0(off) and speeds 1, 2, 3 is Slow, Middle, Fast.
- c) Pull the oscillation switch cord to control the fan oscillation
- d) Never touch the blades with hand or any object!

- e) Do not pull the cord too hard. If damaged after pro-long use, get it repaired by any electrical repairman.
- f) To clean: Disconnect the power cord from the mains. Remove the guard and the blades carefully. Do not drop the blades! First use soft cloth with light soap to clean off oil stains. Then wipe and polish with dry cloth. Never use polish or any corrosive liquid that will damage the paint, metal or plastic! Put back the blades and lock the guard securely before use.

NO exchange will be entertained if the above instructions are not followed. Always Test the product first before purchase.

AFTER INSTALLATION

NOISE:

When it is quiet (especially at night) you may hear occasional small noises. Slight power fluctuations and frequency signals superimposed in the electricity for off-peak hot water control, may cause a change in fan motor noise.

This is normal. Please allow a 24-hour “settling-in” period, most noises associated with a new fan disappear during this time.

The manufacturer’s warranty covers actual faults that may develop and NOT minor complaints such as hearing the motor run – all electric motors are audible to some extent.

CARE & CLEANING

- Periodic cleaning of your ceiling fan is the only maintenance required. Use a soft brush or lint free cloth to avoid scratching the paint finish. Please turn off electricity power when you do so.
- **Do not** use water when cleaning your ceiling fan. It could damage the motor or the blades and create the possibility of an electrical shock.
- The motor has a permanently lubricated ball bearing. There is no need to oil.

NOTE:

Always turn off the power at the mains switch before attempting to clean your fan.

TECHNICAL INFORMATION

Ceiling Fan model	Finish	Rated Voltage	Rated power (motor)
2524	Matt black	220-240VAC	46W
2525	Brushed chrome	220-240VAC	46W

TROUBLE-SHOOTING CHECKLIST

TROUBLE	PROBABLE CAUSES	SUGGESTED REMEDY
1. Fan will not start (Warning: The wall fan must be switched OFF, and the assistance of a licensed electrician maybe required.)	A. Fuse or circuit breaker blown.	Check main and branch circuit fuses or circuit breakers.
	B. Loose power line connections to the fan.	Check line wire connections to fan
2. Fan sound noisy	A. Loose fan blade screws.	Re-tighten all screws on fan blades but never over-tighten.
	B. Fan not secured against wall.	Re-tighten all screws in the hanging bracket or plate.
3. Mechanical Noise	A. Allow at least for 8 hours settling-in period.	

WARNING: THE FAN MUST BE SWITCHED OFF, BEFORE TROUBLE SHOOTING IS PERFORMED.

WARRANTY CONDITIONS

This product is guaranteed against electrical defects in material or manufacturing workmanship for faults when under normal domestic/residential conditions for a certain period from the date of purchase. This warranty covers parts and labour costs for the motor subject to the following conditions:

1. Installation being performed by a qualified licensed Electrician.

This warranty will not apply if the fan is installed by anyone other than a licensed electrician. Problems arising from incorrect installation are not covered by the warranty. The cost of repairs and/or service call where the defect is due to the installation and not due to faulty material or workmanship, in accordance with wholesaler and their authorized agent, will be payable at time of repair.

2. Repair work being carried out by a licensed electrician only after authorization by the wholesaler or their authorized agent to complete the repair and is subject to the supply of dated proof of purchase and installing electricians' details.
3. The exclusion of the warranty will be due to any changes to ceiling fan blade or motor, plated and/or painted finishes due to climatic conditions (moisture, salt air etc) or after 6 months from the date of purchase or other circumstances deemed to be beyond the control of wholesaler or their authorized agents.
4. **The warranty service does not cover:**
 - a. Transportation and in-transit insurance costs if the product or parts thereof have to be returned for repair or replacement to the retailer or their authorized agent.
 - b. Repair of defects caused by accident, fire, misuse, alterations modification, negligence, incorrect or incomplete installation/operation, any unauthorized person attempting to repair the ceiling fan, or acts of God.
 - c. Claims or damage to furniture, carpet, wall foundations or any other consequential loss either direct or indirectly resulting from a faulty fan.

5. The warranty applies to actual faults which may develop. Minor running noises are not covered. All electrical motors have some audible noise. Allow at least eight hours of operation to allow the bearings to properly seat. the fan, especially when set on low, may feel warm to touch – this is not a fault. If excessive heat is generated a service call may be required. Fan noises can vary due to slight power fluctuations and mains frequency signals for off – peak-controlled appliances. These changes are most noticeable in the quiet of night, mains frequency signals which come across as an intermittent hum (mostly at night) are out of the control of the manufacturer, in these cases your electricity provider should be contacted, or an electrician to fit a suitable noise filter.
6. Threaded components such as blade nuts can work slightly loose during normal operation. These should be tightened regularly to ensure that the fan does not develop operation noises. If noises do develop, check this aspect before requesting service. This is not covered by the warranty.
7. Minor variation of speed may be evident between different fans, even in the same model and is not a product fault and not covered by the warranty.
8. Blades are not covered by the warranty against defect in material. The replacement of the blades is not covered by the warranty service, notification within 48 hours of installation is required where blades have found to be broken on unpacking, contact the retailer who will send you a new set of blades. Each blade set is balanced, so it is important to replace all blades. Blades affected by climatic conditions and by maintenance are not covered by this warranty.

For under warranty service, contact the hotline number in this booklet and advise: the model number and style, the nature of the fault, date, and place of purchase. Service cannot be arranged without this information.

Prior to requesting service, please consult the Trouble-shooting checklist that is printed in the manual

- **All electric motors, including fans, make some noise and may feel hot to touch – this is not a fault.**
- **Finish to the complete fan is covered by 1 Years warranty.**
- **Blade replacements are not covered.**

FAN WARRANTY DETAIL

Retain AND Fill this form and keep it for your personal records and warranty purposes

NAME.....

ADDRESS.....

.....POSTCODE.....

MODEL NUMBER.....

(PO# or DATECODE Sticker here)

PO NUMBER or DATECODE

DATE OF PURCHASE.....

INSTALLING LICENSED ELECTRICIAN.....

.....

LICENCE No.....

ATTACH PROOF OF PURCHASE HERE

IN THE EVENT OF A PRODUCT FAULT, PLEASE ENSURE ALL DETAILS ARE COMPLETED ABOVE.