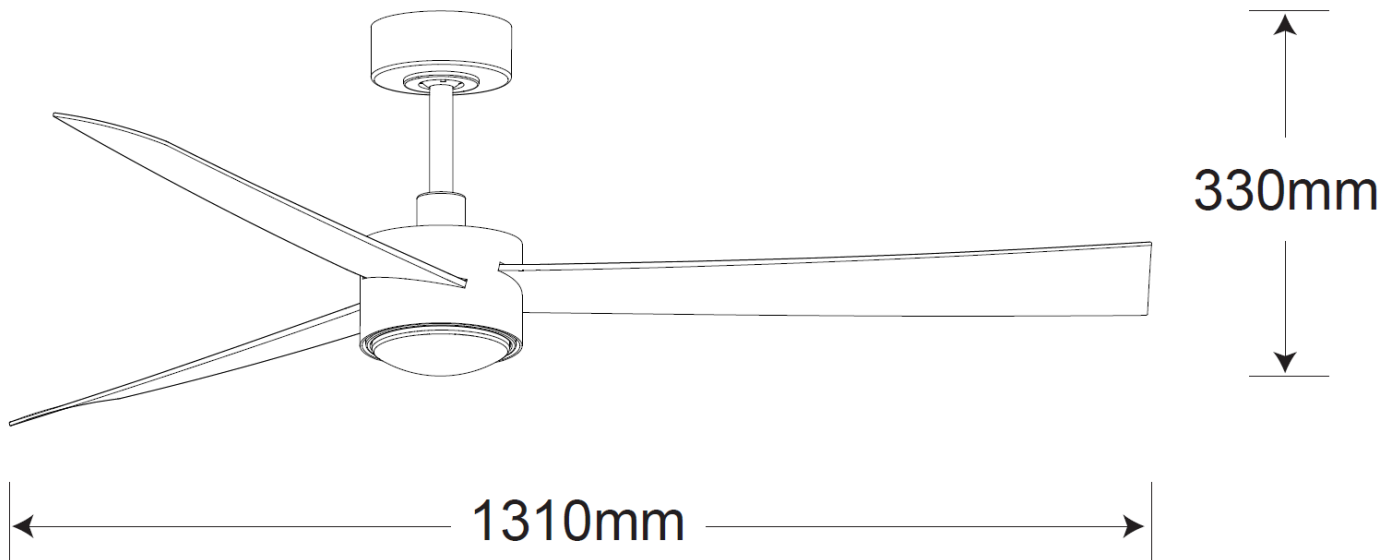


ZEBBIES

Francolin

DC Ceiling Fan Manual

- **INSTALLATION**
- **OPERATION**
- **MAINTENANCE**
- **WARRANTY INFORMATION**



Thank you for purchasing the latest in energy saving ceiling fans. This fan runs on DC (direct current) power which gives it the benefit of being super energy efficient whilst still maintaining high volume air-movement and silent operation.

Energy saving - The DC motor is the latest technology in fan design. Its highly efficient motor saves up to 65% more energy than ceiling fans with traditional AC motors.

Silent operation – This DC fan motor is programmed with a stabilized current which efficiently reduces motor noise.

Low operating temperature – The DC power is managed effectively which brings down the motor operating temperature to less than 50°C. This results in a much cooler motor than a standard AC fan and increases the longevity of the motor.

6 speed remote control - Regular AC ceiling fans usually come with only 3 speeds, this DC fan comes complete with a 6 speed remote, which gives a greater choice of comfort levels.

SAFETY PRECAUTIONS

1. **NOTE:** Read instructions carefully for safe installation and fan operation.
2. This appliance can be used by children aged from 8 years and above and persons with reduced physical, sensory or mental capabilities or lack of experience and knowledge if they have been given supervision or instruction concerning the use of the appliance in a safe way and understand the hazards involved. Cleaning and maintenance shall not be undertaken by children without supervision.
3. Children should be supervised to ensure that they do not play with the appliance.
4. An all-pole disconnection switch must be incorporated into the fixed wiring, in accordance with local wiring rules.
5. Do not dispose of electrical appliances as unsorted municipal waste, use separate collection facilities. Contact your local government for information regarding the collection systems available. If electrical appliances are disposed of in landfills or dumps, hazardous substances can leak into the ground water and get into the food chain, damaging your health and well-being.
6. The structure to which the fan is to be mounted must be capable of supporting a weight of 18 kg.
7. The fan should be mounted so that the blades are more than 2.3 m above the floor.



Francolin Installation Instructions

8. This fan is suitable for indoor, alfresco and coastal areas where the fan is fully undercover with a minimum of 1 wall. This fan is not waterproof. When installed in an alfresco or coastal area, the ceiling fan must be positioned in a location protected from water, wind, dust and salt. Exposure to these elements will void the warranty. Mounting the fan in a situation where it is subject to water or moisture is dangerous and may increase the risk of damage, injury or electrical shock and will void the warranty.

9. Electrical installation should be performed by a qualified licensed electrician

10. **WARNING:** If unusual wobbling or oscillating movement is observed, immediately stop using the ceiling fan and contact the manufacturer, its service agent or suitably qualified persons.

11. The replacement of parts of the safety suspension system device shall be performed by the manufacturer, its service agent or suitably qualified persons.

12. The fixing means for attachment to the ceiling such as hooks or other devices shall be fixed with a sufficient strength to withstand 4 times the weight of the ceiling fan; that the mounting of the suspension system shall be performed by the manufacturer, its service agent or suitably qualified persons.

13. **NOTE:** This fan hanging system supports a maximum 10 degree angled ceiling installation.

14. **NOTE:** The bracket screws provided are for use with wooden structures only. For structures other than wood, the appropriate screw type **MUST** be used. Ensure the screws used are suitable for the mounting surface and the surrounding environment.

15. **NOTE:** If there are two or more DC ceiling fans installed in the one location, an Isolation switch is required for each ceiling fan, this is required when programming the remote and receiver to pair together.

16. **NOTE:** Don't run the motor without blades installed!

17. Take note the correct side of the blades with the marking "THIS SIDE UP" faces the ceiling.

18. **NOTE:** Fan installation step 9, if no lamp (H) is required, install the adapter (J) on the fan assembly, then install the bottom cover (K) on the adapter (J); If lamp(H) is required, install the light kit plate (G) on the fan assembly, then install the lamp(H) on the fan assembly.

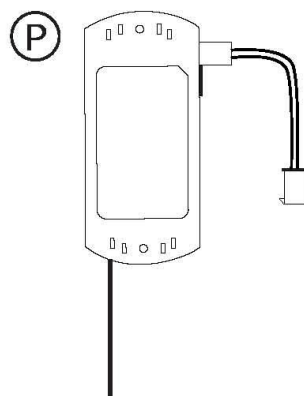
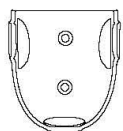
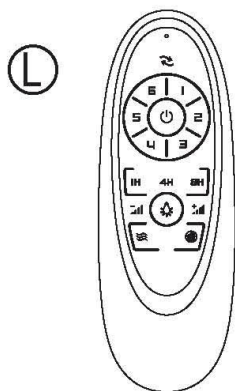
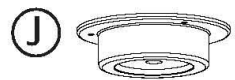
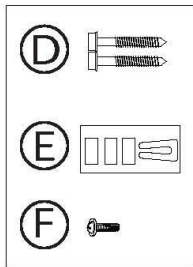
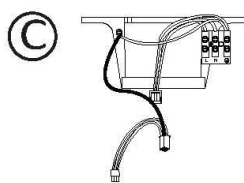
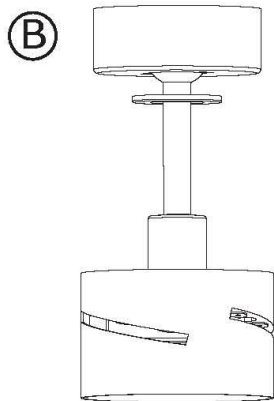
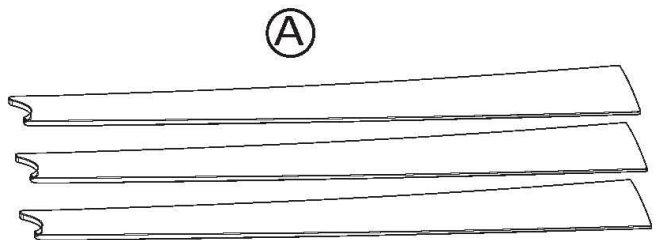
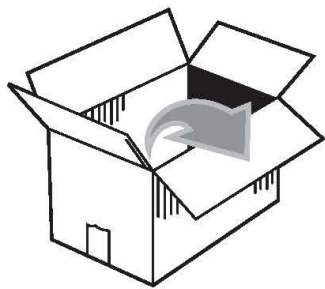
19. **NOTE:** When used with extension down rod, use the light kit extension cable (I).

20. Use the switch on the LED lamp to select your desired colour temperature - 3000K or 4000K or 5000K.

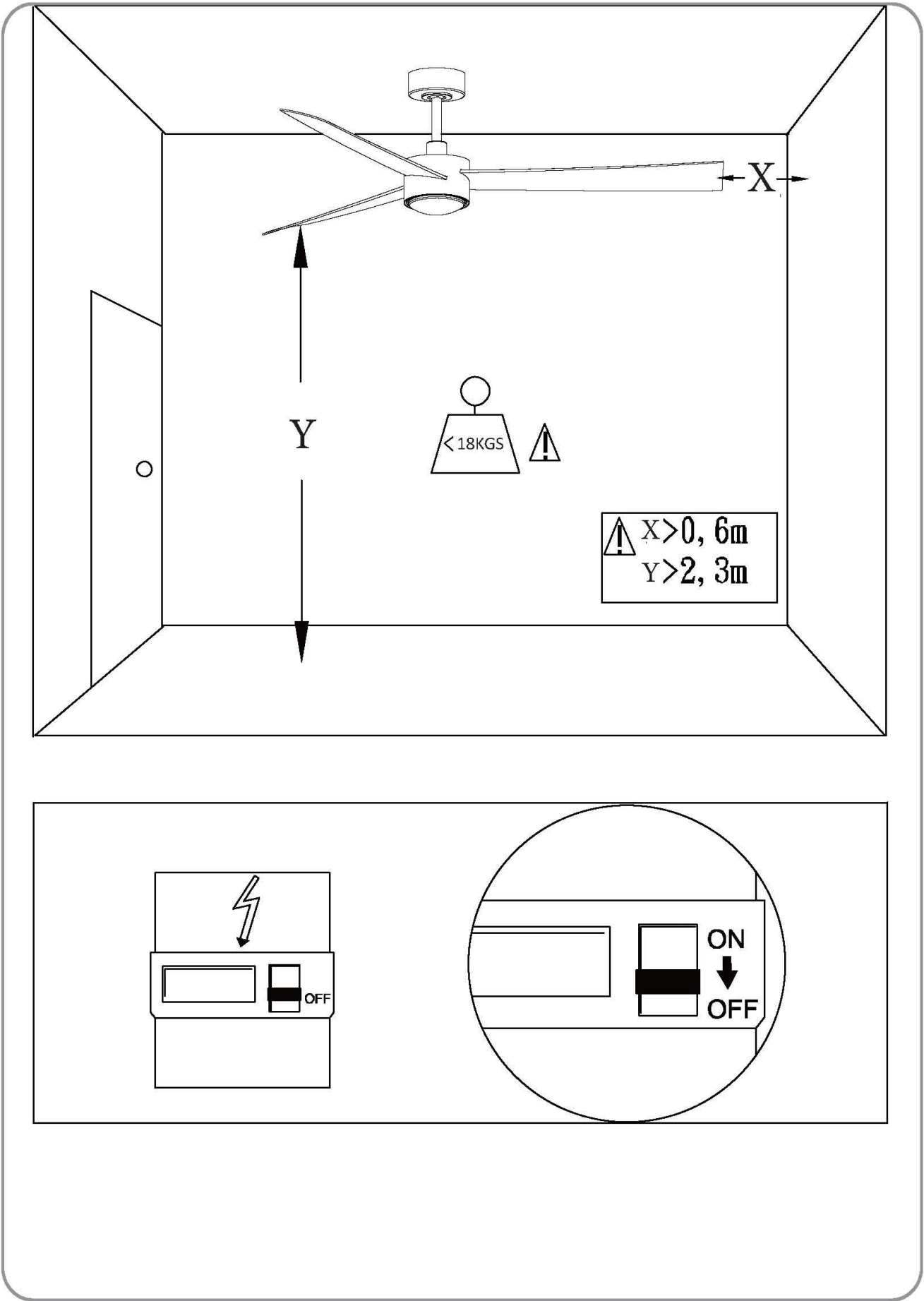
21. **NOTE:** There may be slight delays with the LED lamp start up or slight uneven light performance when more than one LED lamp luminaire is linked together, switched ON. This is not a product fault and as such is not covered under warranty.



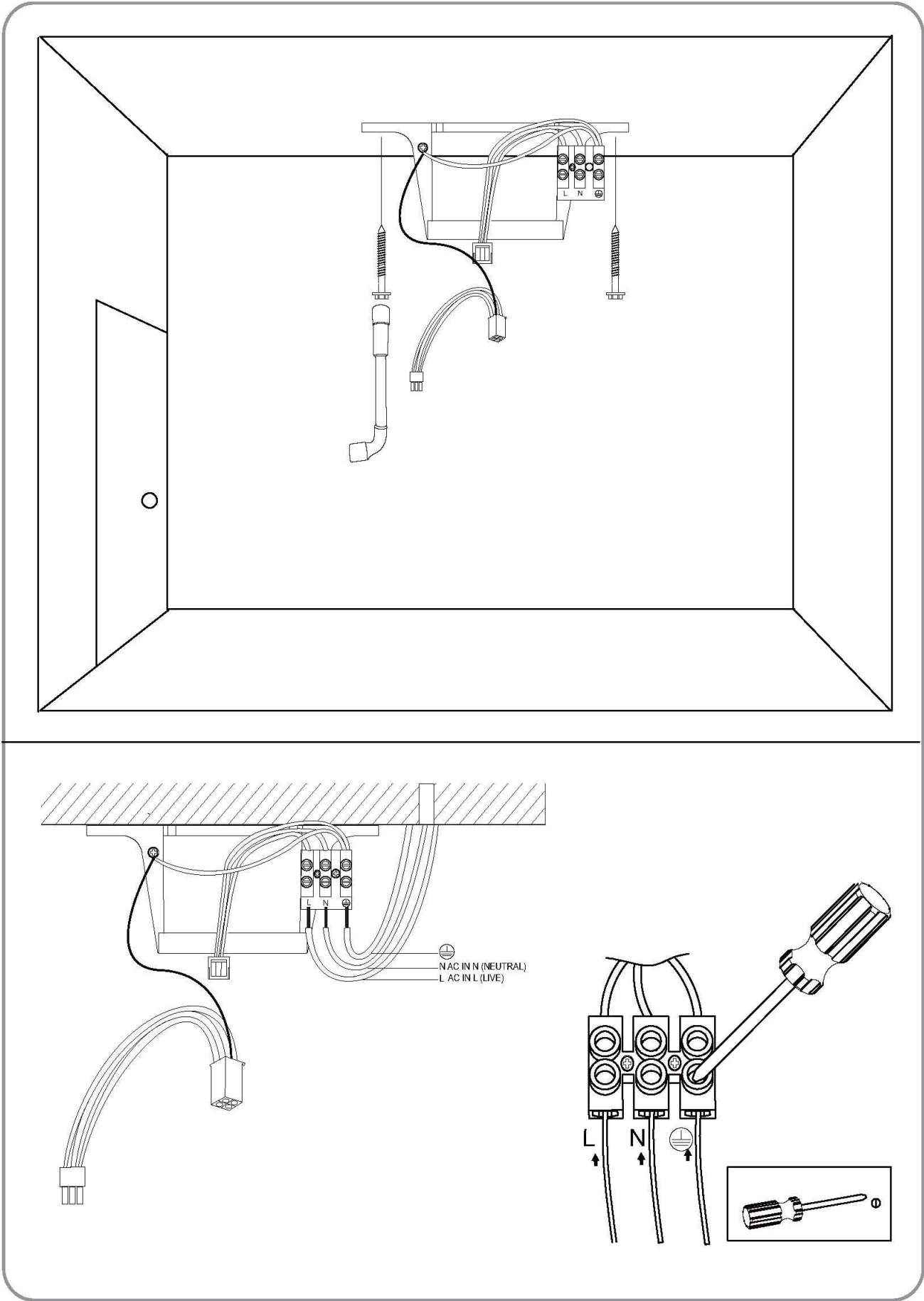
Francolin Installation Instructions



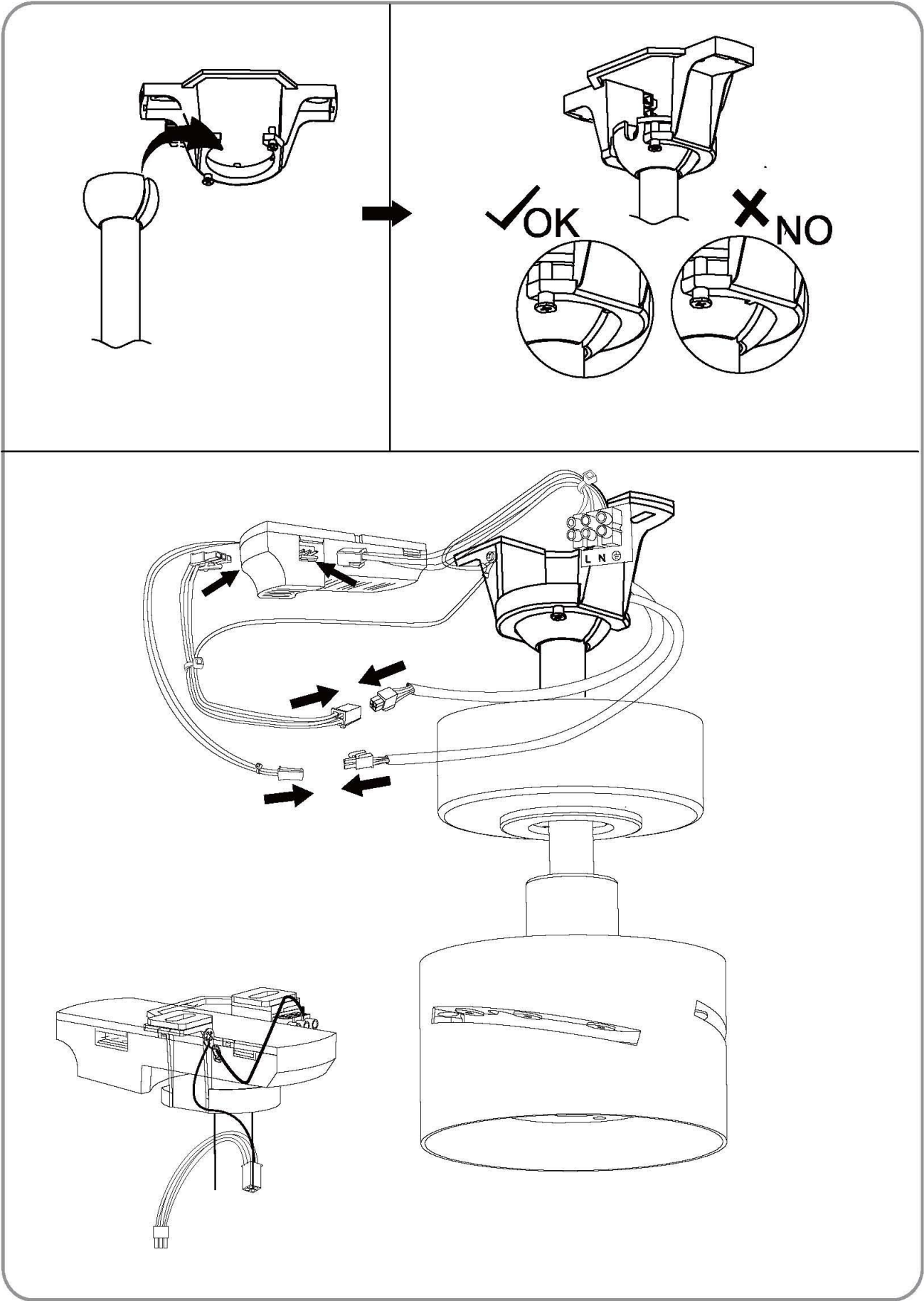
Francolin Installation Instructions



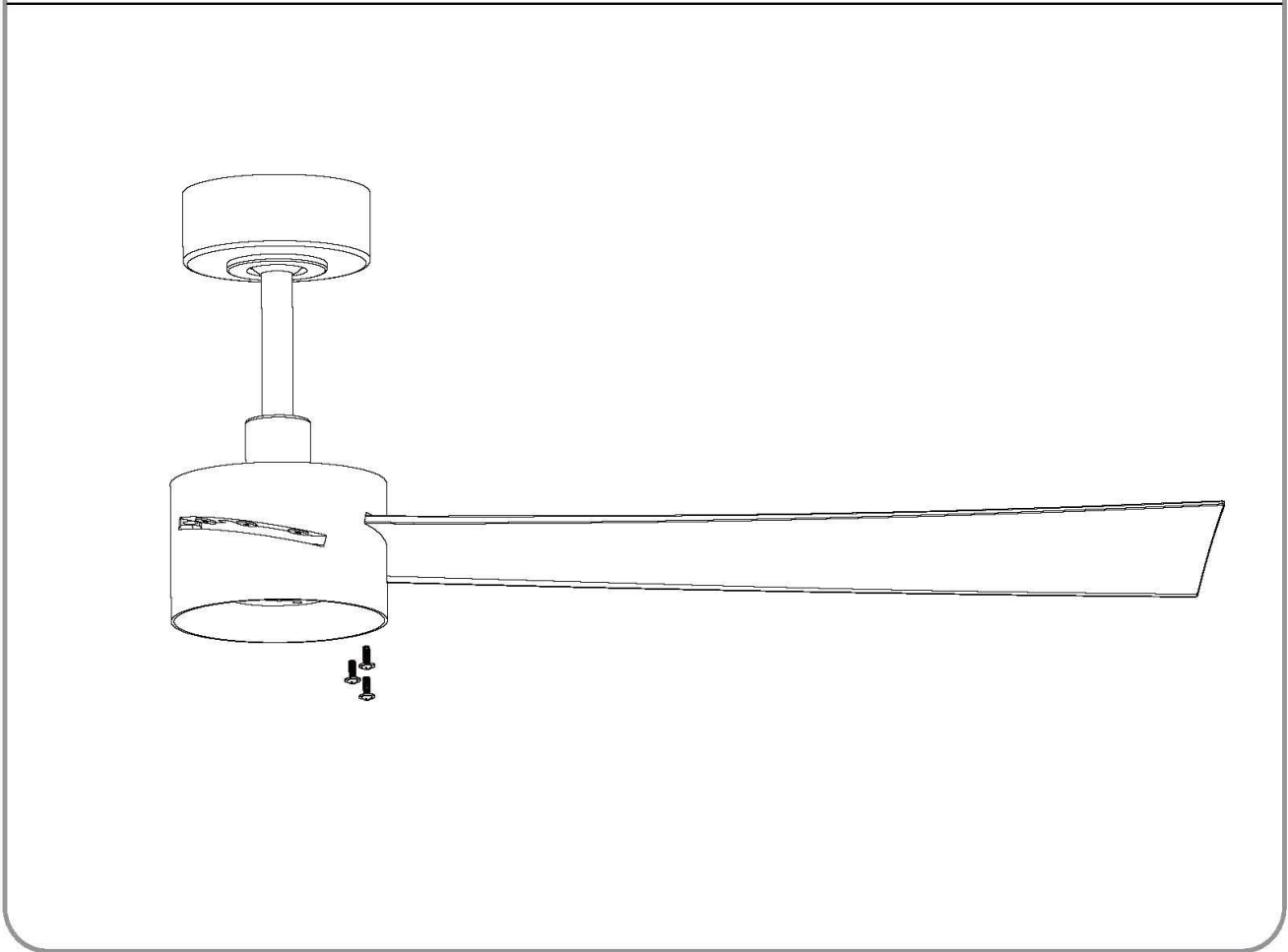
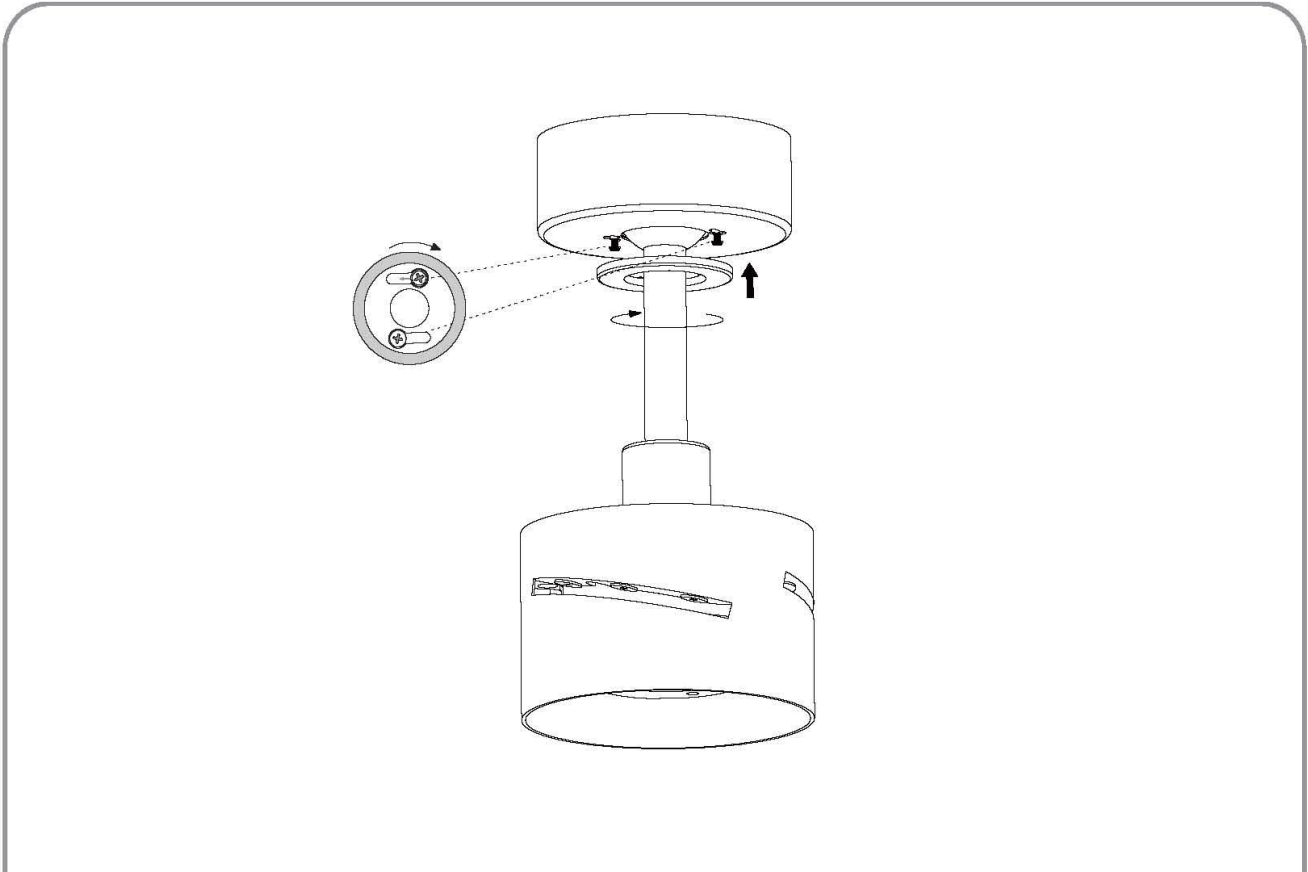
Francolin Installation Instructions



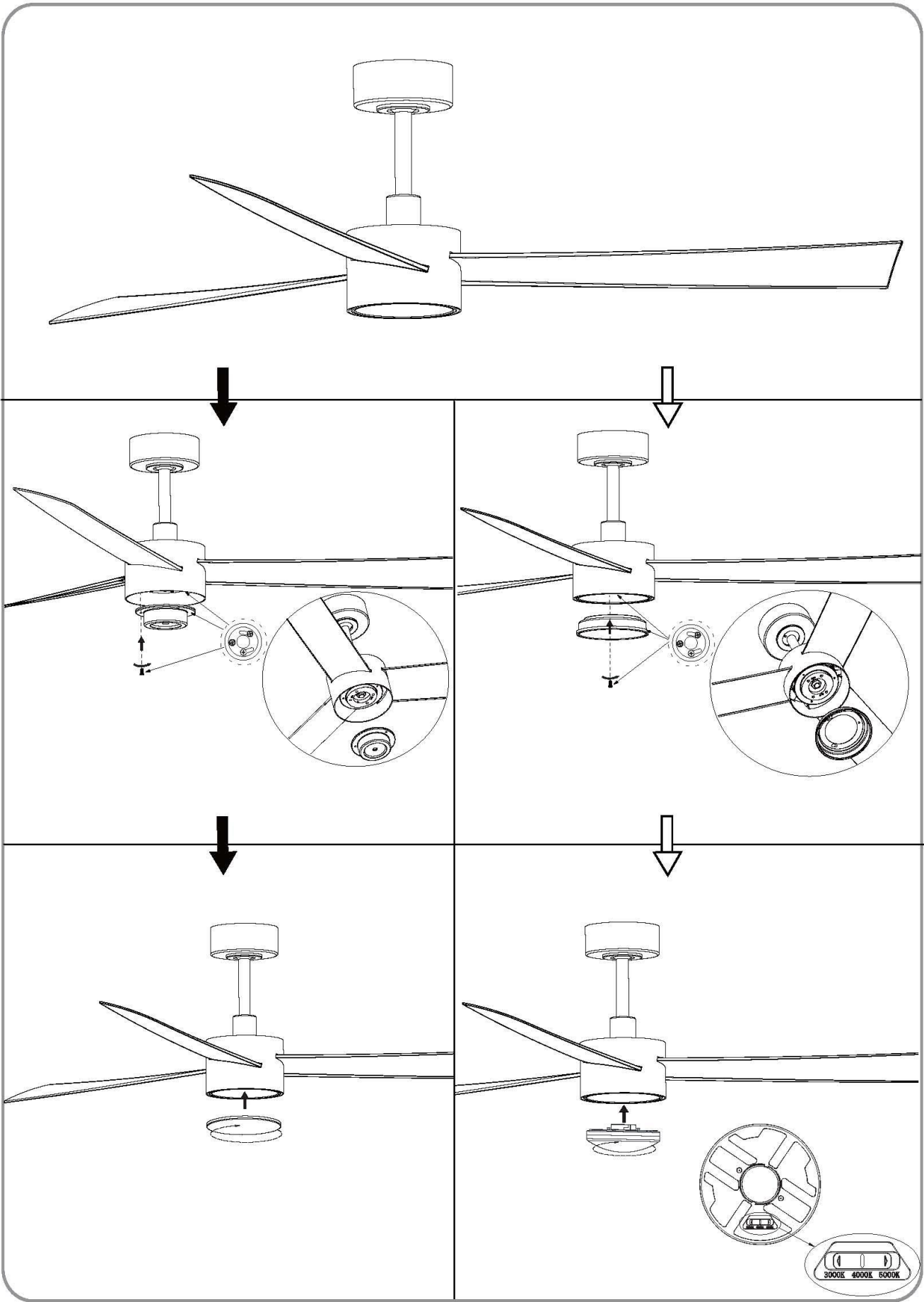
Francolin Installation Instructions



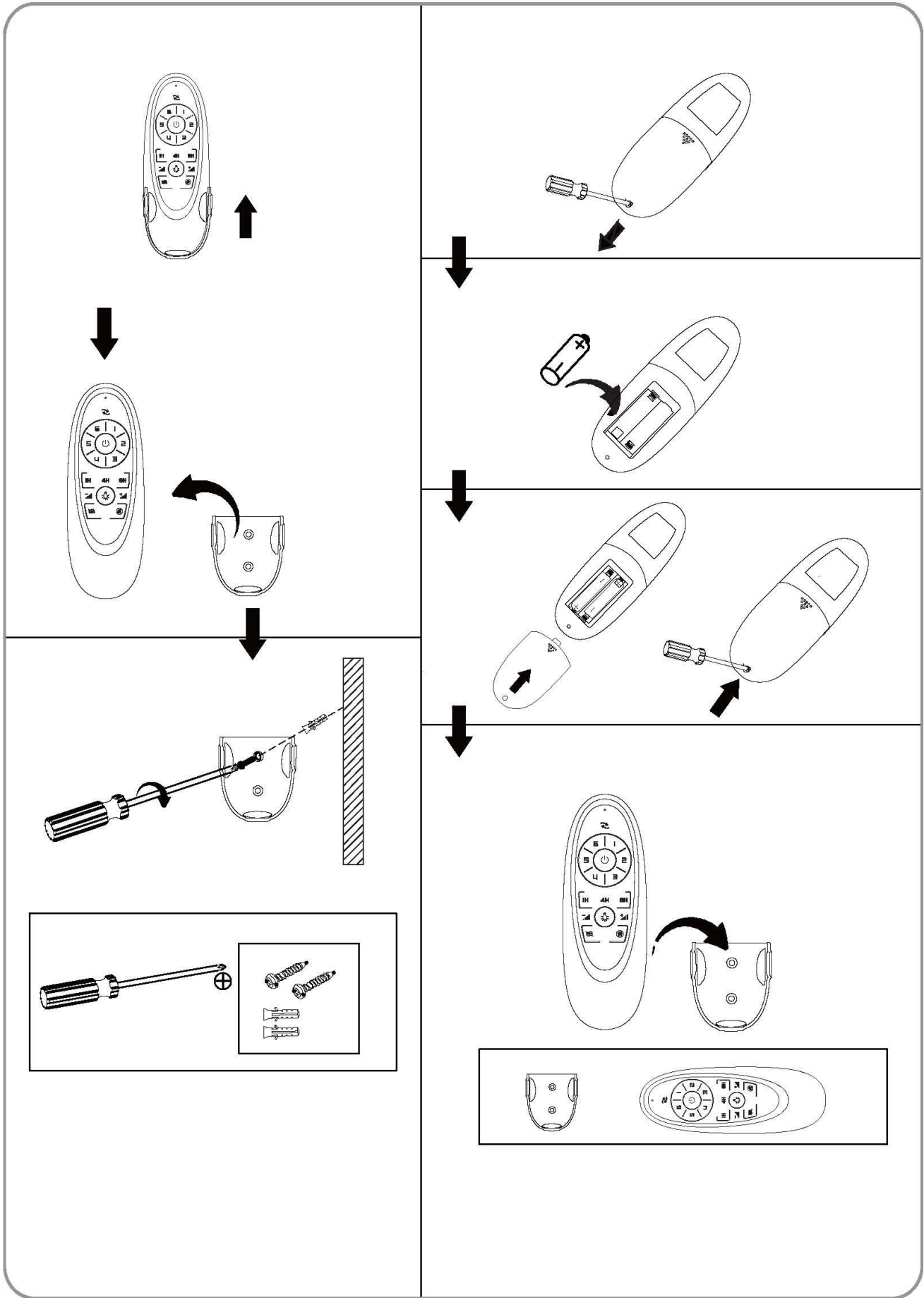
Francolin Installation Instructions



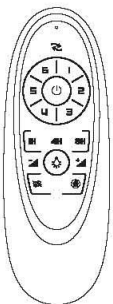
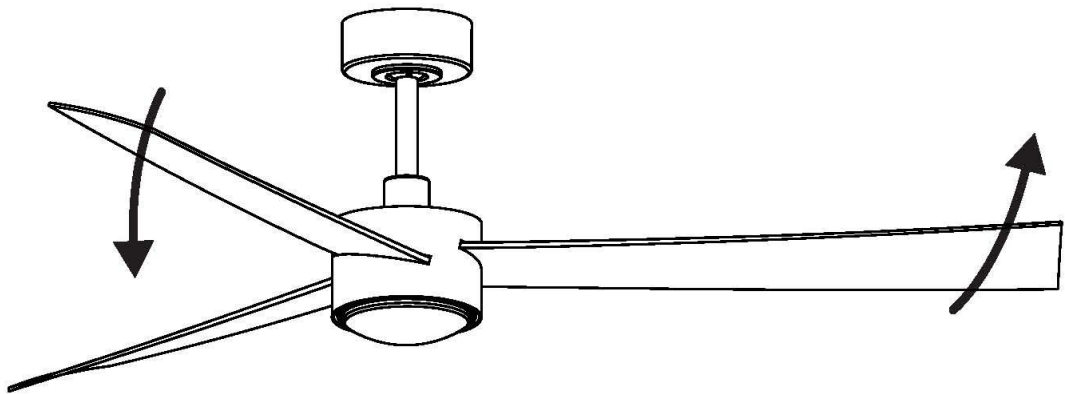
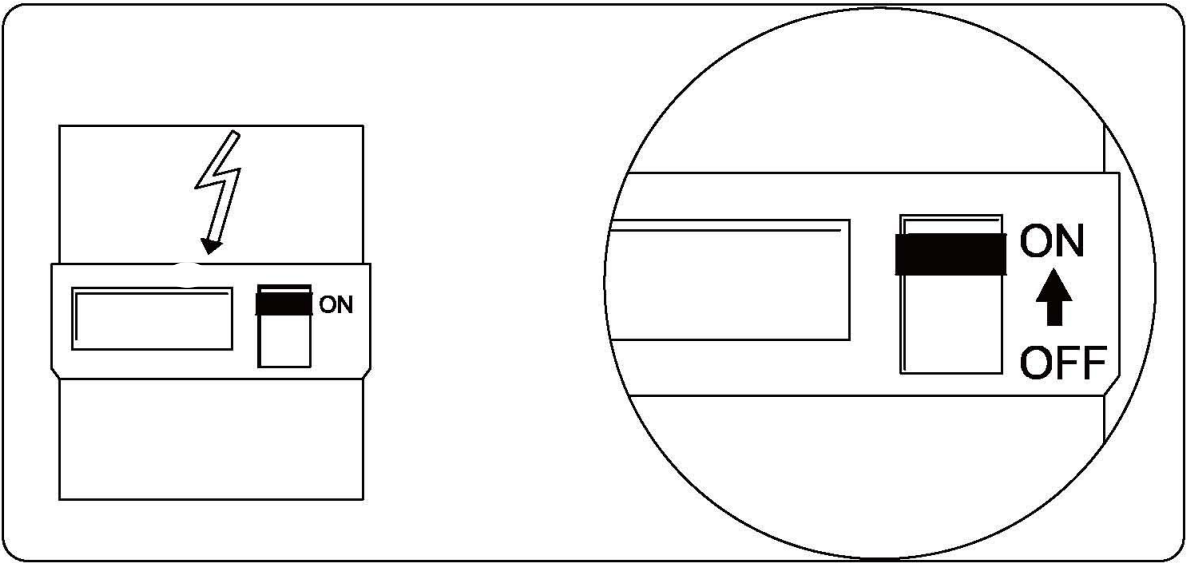
Francolin Installation Instructions



Francolin Installation Instructions



Francolin Installation Instructions

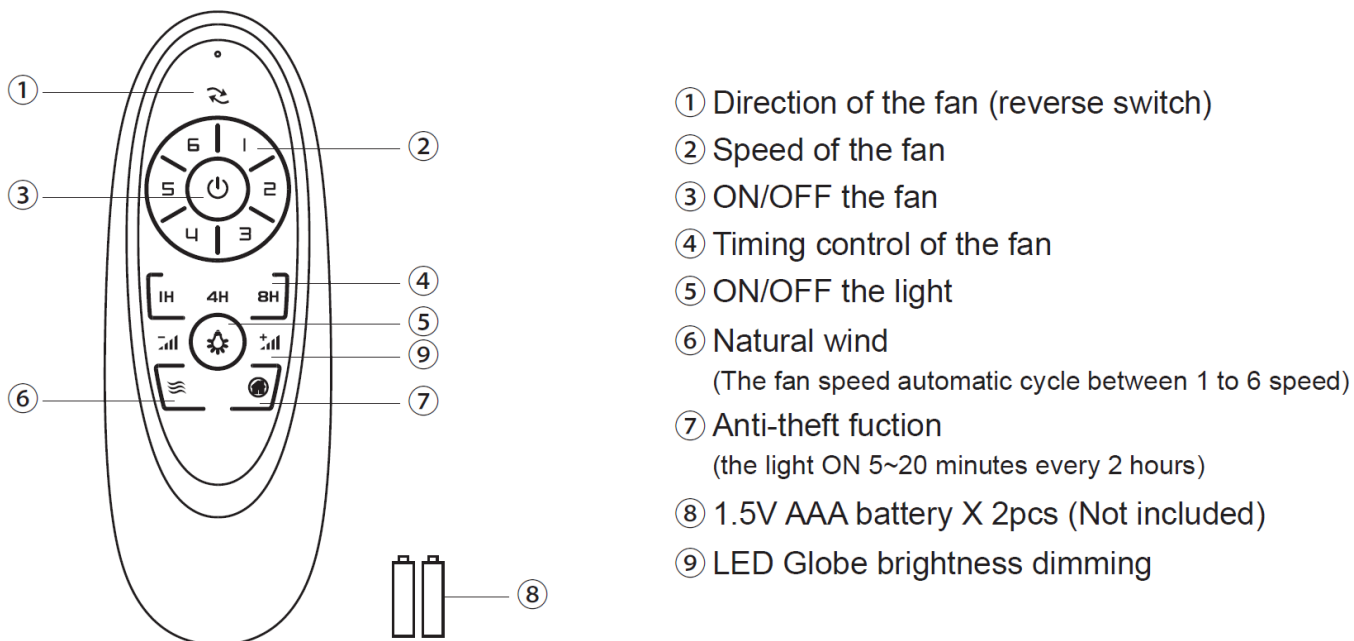


Francolin Installation Instructions

USING YOUR CEILING FAN

REMOTE CONTROL

1. Open the battery compartment cover by removing the securing screw and insert 2 x 1.5V AAA batteries (not included). Note the correct battery polarity (+/-) when inserting the battery, and then replace the cover and secure with the screw.
2. Test the remote by pressing and hold any button. A blue LED will be lit up at the top of the remote to indicate that there is power to the remote and it is ready for use to control the fan.
3. Follow the guide below to operate the fan and learn the functions.



Use the switch on the LED globe to select your desired colour temperature - 3000K or 4000K or 5000K
The LED globe with dimmable function which is controlled by remote.

When the LED light is ON and at 100% brightness, press the buttons “-” & “+” to dim the LED light brightness level, press button on the left to dim further in the following sequence: 100% brightness → 0% brightness, press the button “+” to dim further in the following sequence: 0% brightness → 100% brightness.

The remote has memory function. If the fan or light is turned off by the isolating switch, it will memorise and recover the last status when turned on next.

REPAIRING THE FAN RECEIVER & REMOTE PAIRING

NOTE: The pairing of the remote and receiver has been done at the factory.

When the ceiling fan is installed, pairing the fan receiver and remote is NOT required.

Should the remote and receiver lose control after installation or during use, the pairing of the remote and the receiver must be repaired. On the next page there are the operating symptoms and methods to repair the pairing of the DC ceiling fan remote and receiver.



Francolin Installation Instructions

Issues:

- Loss of control - Fan is only running at high speed after installation
- Loss of control - No reverse function after installation
- Loss of control - Remote cannot communicate with the receiver

Solution:

- Switch off the main power of ceiling fan.
- Switch on the main power of the ceiling fan. Press and hold the On/Off button on the remote for 5 seconds within 30 seconds after switching on. There will be a notification 'beep' sound from the receiver to indicate that the pairing process is successful.
- Turn on and select the different speed of the ceiling fan to check the operation of the fan.

AFTER INSTALLATION

NOTE: Ceiling fans tend to move during operation due to the fact that they are mounted on a rubber grommet. If the fan was mounted rigidly to the ceiling it would cause excessive vibration. Movement of a few centimetres is quite acceptable and DOES NOT suggest any problem.

TO REDUCE THE FAN WOBBLE:

Please check that all screws which fix the mounting bracket and down rod are secure.

NOISE:

When it is quiet (especially at night) you may hear occasional small noises. Slight power fluctuations and frequency signals superimposed in the electricity for off-peak hot water geyser, may cause a change in fan motor noise. This is normal. Please allow a 24-hour "settling-in" period, most noises associated with a new fan disappear during this time.

The manufacturer's warranty covers actual faults that may develop and NOT minor complaints such as hearing the motor run – All electric motors are audible to some extent.

CARE & CLEANING

NOTE: Always turn OFF the power at the mains switch before performing any maintenance or attempting to clean your fan.

- Every 6 months periodic cleaning of your ceiling fan is the only maintenance required. Use a soft brush or lint free cloth to avoid scratching the paint finish. Please turn off electricity power when you do so.



Francolin Installation Instructions

- Do not soak or immerse your ceiling fan in the water or other liquids. It could damage the motor or the blades and create the possibility of an electrical shock.
- Ensure that the fan does not come in contact with any organic solvents or cleaners.
- To clean the fan blade, wipe with only a damp clean cloth with NO organic solvents or cleaners.
- The motor has a permanently lubricated ball bearing so there is no need to oil.

SAFETY PRECAUTIONS FOR BATTERY

- **WARNING** – Keep new and used batteries away from children.
- **CAUTION** – Do not ingest battery—Chemical burn hazard.
- Always use 2 x AAA battery type with this ceiling fan remote controller.
- Ensure the batteries are inserted with the correct polarity.
- To prevent false operation during battery insertion or replacement, this ceiling fan must be disconnected from the supply mains.
- On-rechargeable batteries are not to be recharged;
- Different types of batteries or new and used batteries are not to be mixed;
- Remove batteries from the product when not in use for long periods of time.
- Batteries must be removed from the remote transmitter before it is discarded.
- Dispose of exhausted batteries immediately and safely (so they cannot be retrieved by children). Batteries can still be dangerous. Contact your local council to safely dispose of the battery.
- Regularly check the product and make sure the battery box lid is correctly secured. If the battery compartment does not close securely, stop using the product and keep it away from children.
- If you think batteries might have been swallowed or placed inside any part of the body, seek immediate medical attention. If you suspect your child has swallowed or inserted a button battery, call the emergency number of your country, for expert advice.
- Battery Leaks: Batteries contain chemicals and should be treated as any chemical would. Take precautions when handling leaked battery chemicals. Battery chemicals should not be placed near the eyes or ingested. Call the emergency number of your country, for expert advice.

TECHNICAL INFORMATION

Fan	52" FRANCOLIN DC Fan	
Fan Models / SKU#	2523	2559
Finish	White	Matt Black
Rated Voltage	220-240V~ 50Hz	
Rated Wattage (Motor)	35W	
Rated wattage (Lamp)	GX53, Max.12W 1300lm, 3000K-4000K-5000K	
Battery for remote	2 x AAA (not included)	
Weight	4.4kg	
Canopy Dimensions	H:51mm Dia:140mm	



WARRANTY INFORMATION

This product is guaranteed against electrical defects in material or manufacturing workmanship for faults when under normal domestic/residential conditions for a certain period from the date of purchase. This warranty covers parts and labour costs for the motor subject to the following conditions:

1. Installation being performed by a qualified licensed Electrician.

This warranty will not apply if the fan is installed by anyone other than a licensed electrician. Problems arising from incorrect installation are not covered by the warranty. The cost of repairs and/or service call where the defect is due to the installation and not due to faulty material or workmanship, in accordance with wholesaler and their authorized agent, will be payable at time of repair.

2. Repair work being carried out by a licensed electrician only after authorization by the wholesaler or their authorized agent to complete the repair and is subject to the supply of dated proof of purchase and installing electricians' details.
3. The exclusion of the warranty will be due to any changes to ceiling fan blade or motor, plated and/or painted finishes due to climatic conditions (moisture, salt air etc) or after 6 months from the date of purchase or other circumstances deemed to be beyond the control of wholesaler or their authorized agents.
4. **The warranty service does not cover:**
 - a. Transportation and in-transit insurance costs if the product or parts thereof have to be returned for repair or replacement to the retailer or their authorized agent.
 - b. Repair of defects caused by accident, fire, misuse, alterations modification, negligence, incorrect or incomplete installation/operation, any unauthorized person attempting to repair the ceiling fan, or acts of God.
 - c. Claims or damage to furniture, carpet, wall foundations or any other consequential loss either direct or indirectly resulting from a faulty fan.
5. The warranty applies to actual faults which may develop. Minor running noises are not covered. All electrical motors have some audible noise. Allow at least eight hours of operation to allow the bearings to properly seat. The fan, especially when set on low, may feel warm to touch – this is not a fault. If excessive heat is generated a service call may be required. Fan noises can vary due to slight power fluctuations and mains frequency signals for off – peak-controlled appliances. These changes are most noticeable in the quiet of night, mains frequency signals which come across as an intermittent hum (mostly at night) are out of the control of the manufacturer, in these cases your electricity provider should be contacted, or an electrician to fit a suitable noise filter.
6. Threaded components such as blade nuts can work slightly loose during normal operation. These should be tightened regularly to ensure that the fan does not develop operation noises. If noises do develop, check this aspect before requesting service. This is not covered by the warranty.
7. Minor variation of speed may be evident between different fans, even in the same model and is not a product fault and not covered by the warranty.



Francolin Installation Instructions

8. Blades are not covered by the warranty against defect in material. The replacement of the blades is not covered by the warranty service, notification within 48 hours of installation is required where blades have found to be broken on unpacking, contact the retailer who will send you a new set of blades. Each blade set is balanced, so it is important to replace all blades. Blades affected by climatic conditions and by maintenance are not covered by this warranty.

For under warranty service, contact your nearest Zebbies store and advise: the model number and style, the nature of the fault, date, and place of purchase. Service cannot be arranged without this information.

Prior to requesting service, please consult the Trouble-shooting checklist that is printed in the manual

- **All electric motors, including fans, make some noise and may feel hot to touch – this is not a fault.**
- **Finish to the complete fan is covered by 1 Years warranty.**
- **Blade replacements are not covered.**

FAN WARRANTY DETAIL

Retain AND Fill this form and keep it for your personal records and warranty purposes

NAME.....

ADDRESS.....

.....POSTCODE.....

MODEL NUMBER.....

PO NUMBER or DATECODE
(PO# or DATECODE Sticker here)

DATE OF PURCHASE.....

INSTALLING LICENSED ELECTRICIAN.....

.....

LICENCE No.....

ATTACH PROOF OF PURCHASE HERE

IN THE EVENT OF A PRODUCT FAULT, PLEASE ENSURE ALL DETAILS ARE COMPLETED ABOVE.

